

CAPNS1 RABBIT PAB

Cat.#: S216382

Product Name: Anti-CAPNS1 Rabbit Polyclonal Antibody

Synonyms: 30K, CANP, CDPS, CSS1, CANPS, CAPN4, CALPAIN4

UNIPROT ID: P04632 (Gene Accession - BC000592)

Background: Calpains are a ubiquitous, well-conserved family of calcium-dependent, cysteine proteases. Calpain families have been implicated in neurodegenerative processes, as their activation can be triggered by calcium influx and oxidative stress. Calpain I and II are heterodimeric with distinct large subunits associated with common small subunits, all of which are encoded by different genes. This gene encodes a small subunit common to both calpain I and II and is associated with myotonic dystrophy. Two transcript variants encoding the same protein have been identified for this gene.

Immunogen: Fusion protein of human CAPNS1

Applications: ELISA, WB, IHC

Recommended Dilutions: IHC: 50-200;WB: 500-2000;ELISA: 1000-5000

Host Species: Rabbit

Clonality: Rabbit Polyclonal

Isotype: Immunogen-specific rabbit IgG

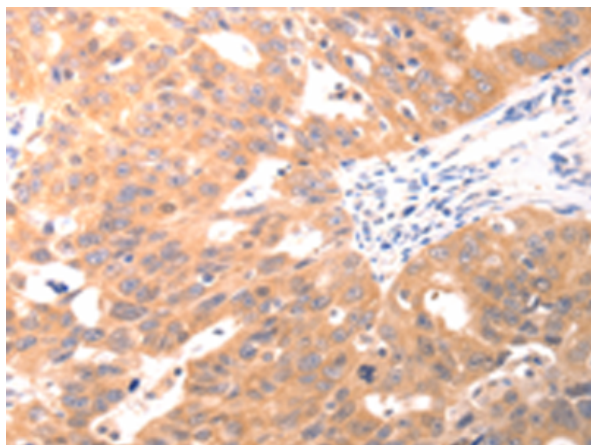
Purification: Antigen affinity purification

Species Reactivity: Human, Mouse, Rat

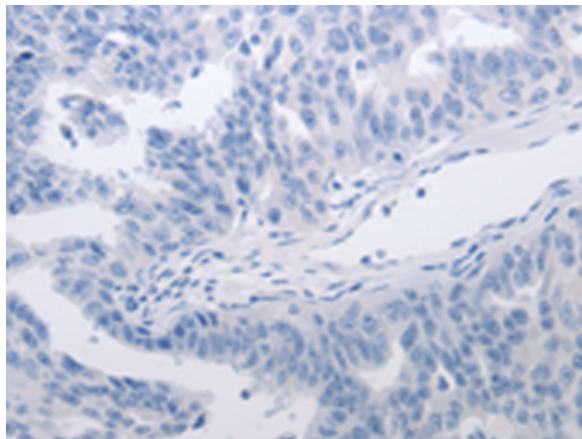
Constituents: PBS (without Mg²⁺ and Ca²⁺), pH 7.4, 150 mM NaCl, 0.05% Sodium Azide and 40% glycerol

Research Areas: Metabolism, Signal Transduction, Cell Biology

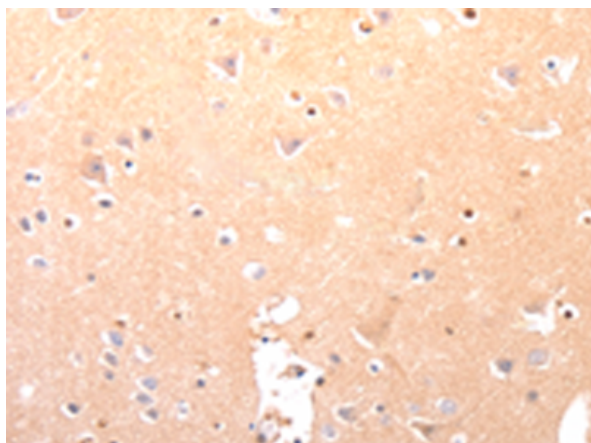
Storage & Shipping: Store at -20°C. Avoid repeated freezing and thawing



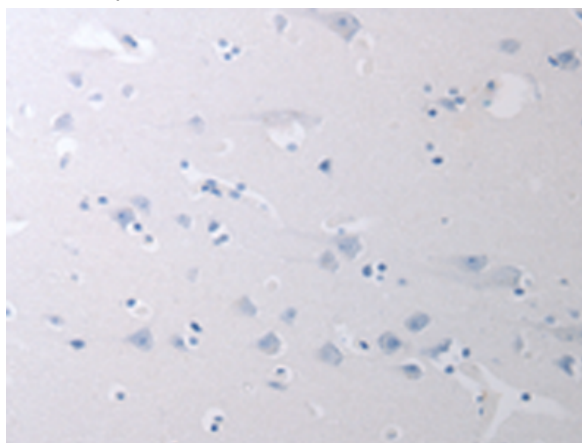
Immunohistochemistry analysis of paraffin embedded Human ovarian cancer tissue using 216382(CAPNS1 Antibody) at a dilution of 1/60(Cytoplasm).



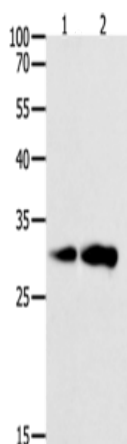
In comparison with the IHC on the left, the same paraffin-embedded Human ovarian cancer tissue is first treated with the fusion protein and then with 216382(Anti-CAPNS1 Antibody) at dilution 1/60.



The image on the left is immunohistochemistry of paraffin-embedded Human brain tissue using 216382(Anti-CAPNS1 Antibody) at a dilution of 1/60.



In comparison with the IHC on the left, the same paraffin-embedded Human brain tissue is first treated with fusion protein and then with D220330(Anti-CAPNS1 Antibody) at dilution 1/60.



Gel: 12%SDS-PAGE, Lysate: 60 µg;
Lane 1-2: K562 cells, NIH/3T3 cells;
Primary antibody: 216382(CAPNS1 Antibody) at dilution 1/800;
Secondary antibody: Goat anti rabbit IgG at 1/8000 dilution;
Exposure time: 15 seconds



Product Description

Pioneering GTPase and Oncogene Product Development since 2010
