

## CAPN2 RABBIT PAB

**Cat.#:** S216381

**Product Name:** Anti-CAPN2 Rabbit Polyclonal Antibody

**Synonyms:** CAPN2; mCANP; CANPL2; CANPml

**UNIPROT ID:** P17655 (Gene Accession - BC021303 )

**Background:** The calpains, calcium-activated neutral proteases, are nonlysosomal, intracellular cysteine proteases. The mammalian calpains include ubiquitous, stomach-specific, and muscle-specific proteins. The ubiquitous enzymes consist of heterodimers with distinct large, catalytic subunits associated with a common small, regulatory subunit. This gene encodes the large subunit of the ubiquitous enzyme, calpain 2. Multiple heterogeneous transcriptional start sites in the 5' UTR have been reported. Two transcript variants encoding different isoforms have been found for this gene.

**Immunogen:** Fusion protein of human CAPN2

**Applications:** ELISA, WB, IHC

**Recommended Dilutions:** IHC: 100-300;WB: 1000-5000;ELISA: 5000-10000

**Host Species:** Rabbit

**Clonality:** Rabbit Polyclonal

**Isotype:** Immunogen-specific rabbit IgG

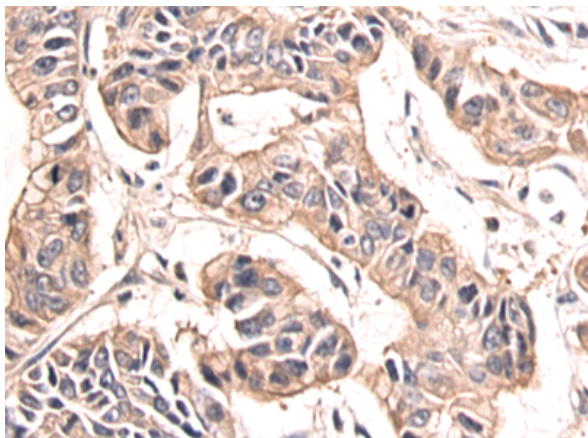
**Purification:** Antigen affinity purification

**Species Reactivity:** Human, Mouse, Rat

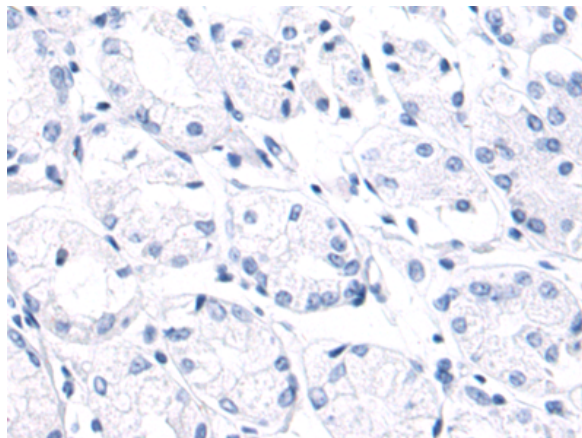
**Constituents:** PBS (without Mg<sup>2+</sup> and Ca<sup>2+</sup>), pH 7.4, 150 mM NaCl, 0.05% Sodium Azide and 40% glycerol

**Research Areas:** Signal Transduction, Cancer, Cardiovascular, Metabolism, Cell Biology

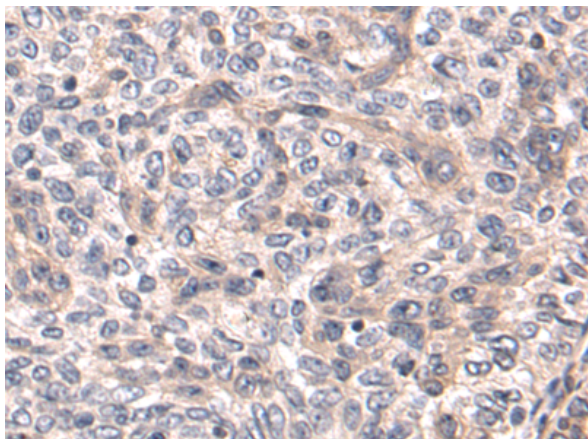
**Storage & Shipping:** Store at -20°C. Avoid repeated freezing and thawing



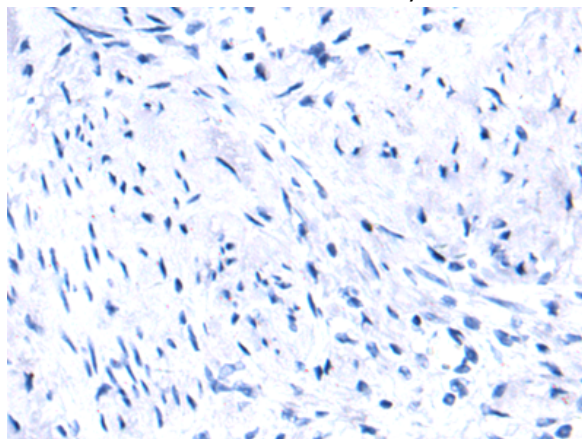
Immunohistochemistry analysis of paraffin embedded Human gastric cancer tissue using 216381(CAPN2 Antibody) at a dilution of 1/100(Cytoplasm).



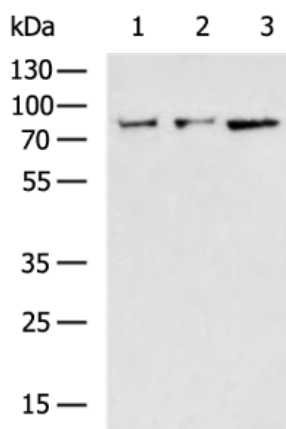
In comparison with the IHC on the left, the same paraffin-embedded Human gastric cancer tissue is first treated with the fusion protein and then with 216381(Anti-CAPN2 Antibody) at dilution 1/100.



The image on the left is immunohistochemistry of paraffin-embedded Human cervical cancer tissue using 216381(Anti-CAPN2 Antibody) at a dilution of 1/100.



In comparison with the IHC on the left, the same paraffin-embedded Human cervical cancer tissue is first treated with fusion protein and then with D220329(Anti-CAPN2 Antibody) at dilution 1/100.



Gel: 8%SDS-PAGE, Lysate: 40 µg;  
 Lane 1-3: A549, HepG2, Hela cell lysates;  
 Primary antibody: 216381(CAPN2 Antibody) at dilution 1/1200;  
 Secondary antibody: HRP-conjugated Goat anti rabbit IgG at 1/5000 dilution;  
 Exposure time: 5 seconds



# Product Description

Pioneering GTPase and Oncogene Product Development since 2010

---