

## CAPN14 RABBIT PAB

**Cat.#:** S221669

**Product Name:** Anti-CAPN14 Rabbit Polyclonal Antibody

**Synonyms:**

**UNIPROT ID:** A8MX76 (Gene Accession - NP\_001138594 )

**Background:** Calpains are a family of cytosolic calcium-activated cysteine proteases involved in a variety of cellular processes including apoptosis, cell division, modulation of integrin-cytoskeletal interactions, and synaptic plasticity (Dear et al., 2000 [PubMed 10964513]). CAPN14 belongs to the calpain large subunit family.

**Immunogen:** Synthetic peptide of human CAPN14

**Applications:** ELISA, WB, IHC

**Recommended Dilutions:** IHC: 50-100;WB: 500-2000;ELISA: 5000-10000

**Host Species:** Rabbit

**Clonality:** Rabbit Polyclonal

**Isotype:** Immunogen-specific rabbit IgG

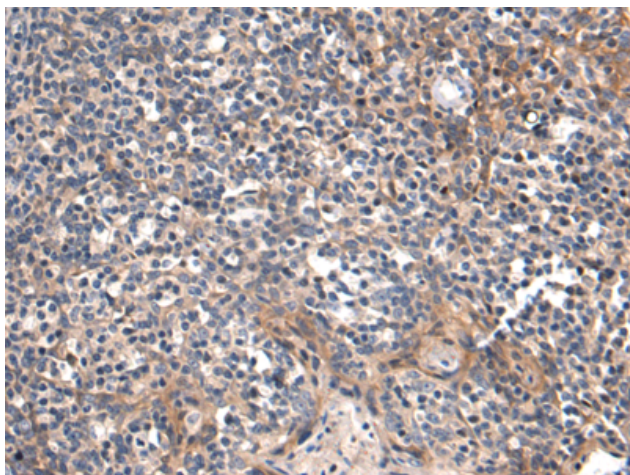
**Purification:** Antigen affinity purification

**Species Reactivity:** Human

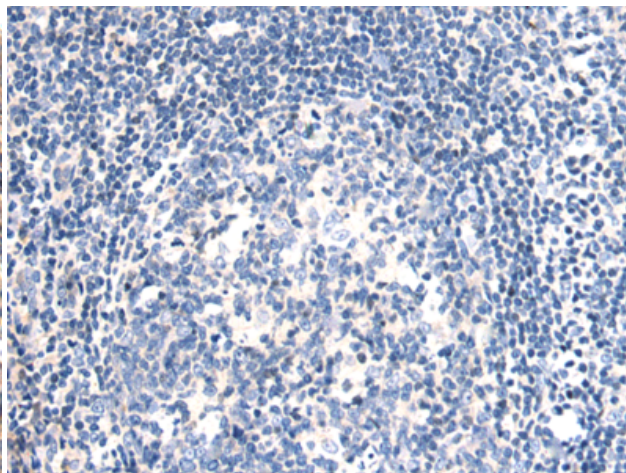
**Constituents:** PBS (without Mg<sup>2+</sup> and Ca<sup>2+</sup>), pH 7.4, 150 mM NaCl, 0.05% Sodium Azide and 40% glycerol

**Research Areas:** Cell Biology, Neuroscience

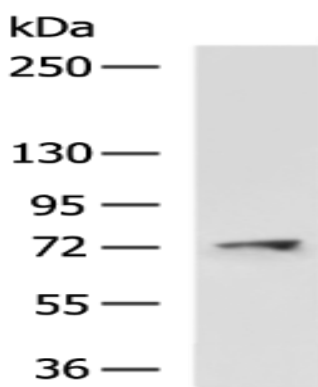
**Storage & Shipping:** Store at -20°C. Avoid repeated freezing and thawing



Immunohistochemistry analysis of paraffin embedded Human tonsil tissue using 221669(CAPN14 Antibody) at a dilution of 1/60(Cytoplasm).



In comparison with the IHC on the left, the same paraffin-embedded Human tonsil tissue is first treated with the synthetic peptide and then with 221669(Anti-CAPN14 Antibody) at dilution 1/60.



Gel: 6%SDS-PAGE, Lysate: 40  $\mu$ g;  
Lane: Human cerebrum tissue lysate;  
Primary antibody: 221669(CAPN14 Antibody) at dilution 1/600;  
Secondary antibody: HRP-conjugated Goat anti rabbit IgG at 1/5000 dilution;  
Exposure time: 15 seconds