

CALD1 RABBIT PAB

Cat.#: S216379

Product Name: Anti-CALD1 Rabbit Polyclonal Antibody

Synonyms: CDM, HCAD, LCAD, H-CAD, L-CAD, NAG22

UNIPROT ID: Q05682 (Gene Accession - BC040354)

Background: This gene encodes a calmodulin- and actin-binding protein that plays an essential role in the regulation of smooth muscle and nonmuscle contraction. The conserved domain of this protein possesses the binding activities to Ca(2+)-calmodulin, actin, tropomyosin, myosin, and phospholipids. This protein is a potent inhibitor of the actin-tropomyosin activated myosin MgATPase, and serves as a mediating factor for Ca(2+)-dependent inhibition of smooth muscle contraction. Alternative splicing of this gene results in multiple transcript variants encoding distinct isoforms.

Immunogen: Fusion protein of human CALD1

Applications: ELISA, WB, IHC

Recommended Dilutions: IHC: 50-150;WB: 1000-5000;ELISA: 2000-10000

Host Species: Rabbit

Clonality: Rabbit Polyclonal

Isotype: Immunogen-specific rabbit IgG

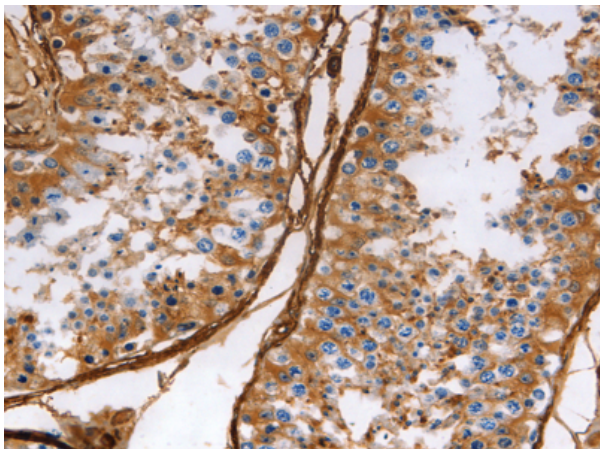
Purification: Antigen affinity purification

Species Reactivity: Human, Rat

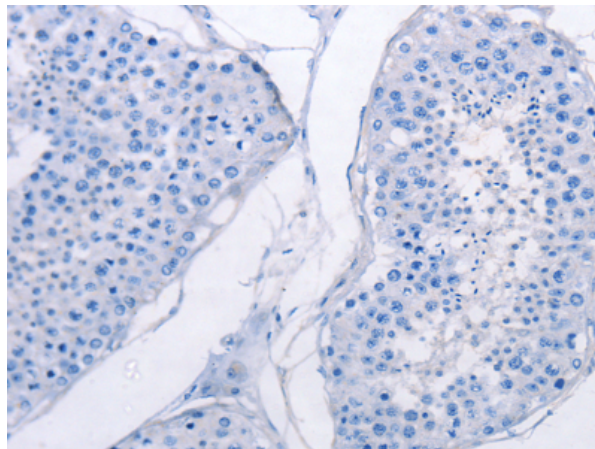
Constituents: PBS (without Mg²⁺ and Ca²⁺), pH 7.4, 150 mM NaCl, 0.05% Sodium Azide and 40% glycerol

Research Areas: Signal Transduction, Cardiovascular

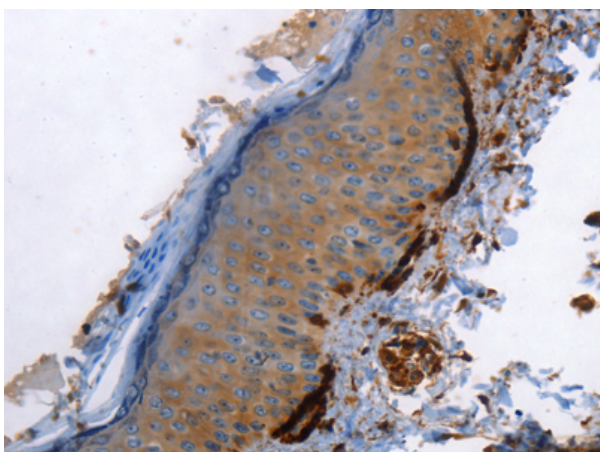
Storage & Shipping: Store at -20°C. Avoid repeated freezing and thawing



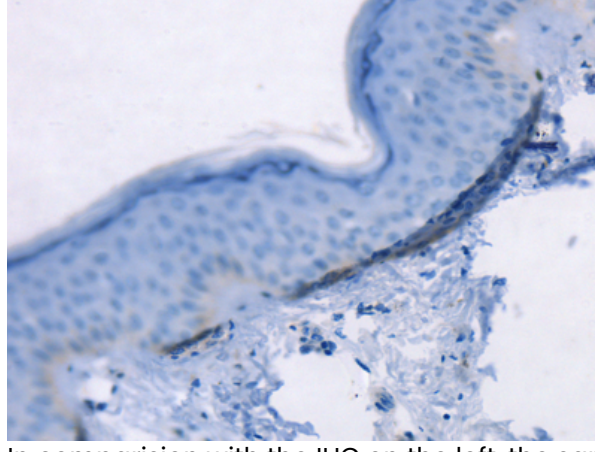
Immunohistochemistry analysis of paraffin embedded Human testis tissue using 216379(CALD1 Antibody) at a dilution of 1/40(Cytoplasm).



In comparison with the IHC on the left, the same paraffin-embedded Human testis tissue is first treated with the fusion protein and then with 216379(Anti-CALD1 Antibody) at dilution 1/40.



The image on the left is immunohistochemistry of paraffin-embedded Human skin tissue using 216379(Anti-CALD1 Antibody) at a dilution of 1/40.



In comparison with the IHC on the left, the same paraffin-embedded Human skin tissue is first treated with fusion protein and then with D220327(Anti-CALD1 Antibody) at dilution 1/40.



Gel: 10%SDS-PAGE, Lysate: 30 µg;
Lane: 293T cells;
Primary antibody: 216379(CALD1 Antibody) at dilution 1/800;
Secondary antibody: Goat anti rabbit IgG at 1/8000 dilution;
Exposure time: 30 seconds



Product Description

Pioneering GTPase and Oncogene Product Development since 2010
