

CALBINDIN RABBIT PAB

Cat.#: N226037

Product Name: Anti-Calbindin Rabbit pAb

Synonyms: avian-type; CAB27; CALB1; Calbindin 1 28kDa; Calbindin; D28K; RTVL H protein

UNIPROT ID: P05937

Background: Buffers cytosolic calcium. May stimulate a membrane Ca(2+)-ATPase and a 3',5'-cyclic nucleotide phosphodiesterase.

Immunogen: A synthetic peptide of human Calbindin

Applications: WB,IHC-P

Recommended Dilutions: WB: 1/500-1/1000 IHC: 1/50-1/100

Host Species: Rabbit

Clonality: Rabbit Polyclonal

Clone ID: -

MW: Calculated MW: 30 kDa; Observed MW: 30 kDa

Isotype: IgG

Purification: Affinity Purified

Species Reactivity: Human,Mouse,Rat

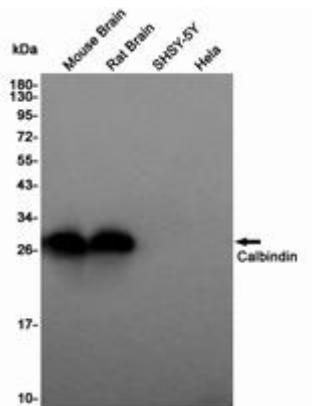
Conjugation: Unconjugated

Modification: Unmodified

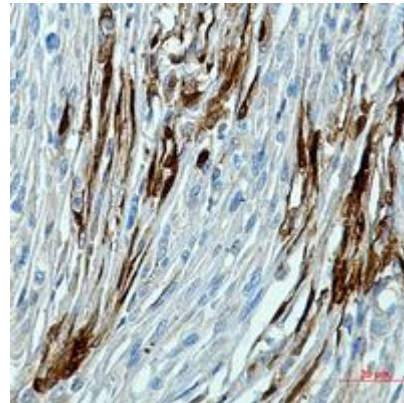
Constituents: PBS (without Mg²⁺ and Ca²⁺), pH 7.3 containing 50% glycerol, 0.5% BSA and 0.02% sodium azide

Research Areas: Neuroscience

Storage & Shipping: Store at -20°C. Avoid repeated freezing and thawing



Western blot analysis of Calbindin in mouse Brain, rat Brain, SH-SY5Y, HeLa lysates using Calbindin antibody.



Immunohistochemistry analysis of paraffin-embedded Human brain using Calbindin antibody. High-pressure and temperature Sodium Citrate pH 6.0 was used for antigen retrieval.