

## CADHERIN RABBIT MAB

**Cat.#:** N262672

**Product Name:** Anti-Cadherin Rabbit Monoclonal Antibody

**Synonyms:** CDHP; CDHE; HJMD; PCAD; CDHN; P-cadherin; E-cadherin; N-cadherin; Cadherin-1; Cadherin-2; Cadherin-3

**UNIPROT ID:** P12830/P22223/P19022

**Background:** Cadherins are calcium-dependent cell adhesion proteins (PubMed:11976333). They preferentially interact with themselves in a homophilic manner in connecting cells; cadherins may thus contribute to the sorting of heterogeneous cell types. CDH1 is involved in mechanisms regulating cell-cell adhesions, mobility and proliferation of epithelial cells (PubMed:11976333). Has a potent invasive suppressor role. It is a ligand for integrin alpha-E/beta-7.

**Immunogen:** A synthetic peptide of human pan Cadherin

**Applications:** WB,IHC-F,IHC-P,ICC/IF,IP

**Recommended Dilutions:** WB: 1/500-1/1000 IHC: 1/50-1/100 IF: 1/50-1/200 IP: 1/20

**Host Species:** Rabbit

**Clonality:** Rabbit Monoclonal

**Clone ID:** R04-5A8

**MW:** Calculated MW: 97 kDa; Observed MW: 130-150 kDa

**Isotype:** IgG

**Purification:** Affinity Purified

**Species Reactivity:** Human,Mouse,Rat,Hamster

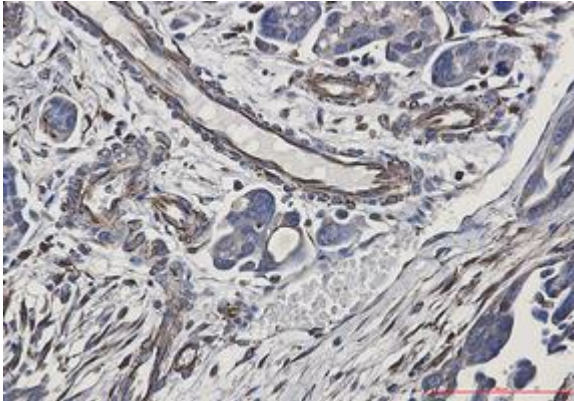
**Conjugation:** Unconjugated

**Modification:** Unmodified

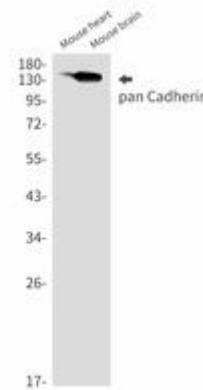
**Constituents:** PBS (without Mg<sup>2+</sup> and Ca<sup>2+</sup>), pH 7.3 containing 50% glycerol, 0.5% BSA and 0.02% sodium azide

**Research Areas:** Signal Transduction

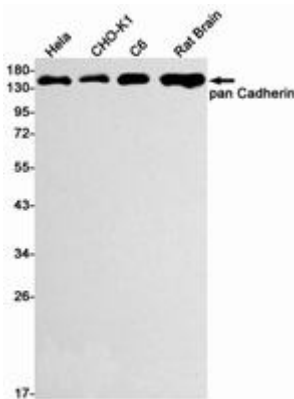
**Storage & Shipping:** Store at -20°C. Avoid repeated freezing and thawing



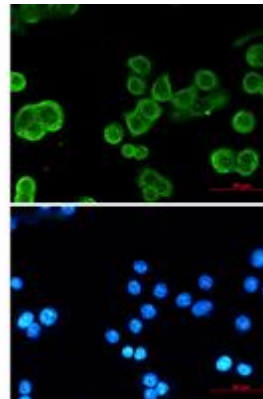
Immunohistochemistry analysis of paraffin-embedded Human Cholangiocarcinoma using pan Cadherin antibody. High-pressure and temperature Sodium Citrate pH 6.0 was used for antigen retrieval.



Western blot analysis of pan Cadherin in mouse heart, mouse brain lysates using Cadherin antibody.



Western blot analysis of pan Cadherin in Hela, CHO-K1, C6, rat Brain lysates using pan Cadherin antibody.



Immunocytochemistry analysis of pan Cadherin (green) in MCF-7 using pan Cadherin antibody, and DAPI(blue).