

CABLES1 RABBIT PAB

Cat.#: S217225

Product Name: Anti-CABLES1 Rabbit Polyclonal Antibody

Synonyms: CABL1; IK3-1; CABLES; HsT2563

UNIPROT ID: Q8TDN4 (Gene Accession - BC037218)

Background: This gene encodes a protein involved in regulation of the cell cycle through interactions with several cyclin-dependent kinases. One study (PMID: 16177568) reported aberrant splicing of transcripts from this gene which results in removal of the cyclin binding domain only in human cancer cells, and reduction in gene expression was shown in colorectal cancers (PMID: 17982127). Multiple transcript variants encoding different isoforms have been found for this gene.

Immunogen: Fusion protein of human CABLES1

Applications: ELISA, WB, IHC

Recommended Dilutions: IHC: 50-200;WB: 500-2000;ELISA: 5000-10000

Host Species: Rabbit

Clonality: Rabbit Polyclonal

Isotype: Immunogen-specific rabbit IgG

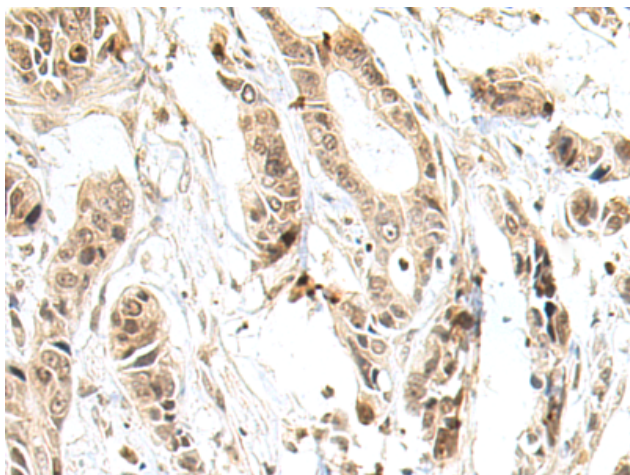
Purification: Antigen affinity purification

Species Reactivity: Human, Mouse

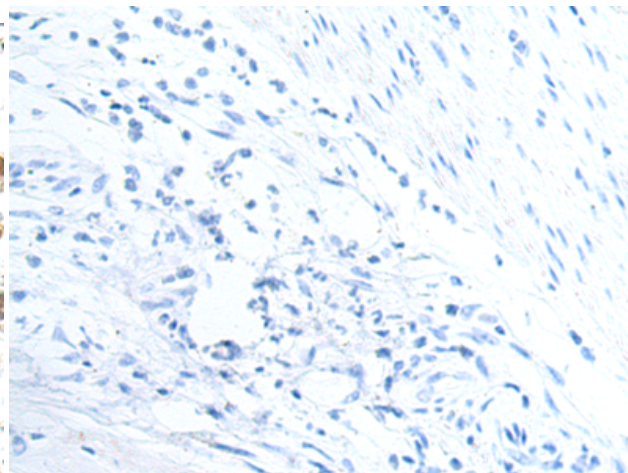
Constituents: PBS (without Mg²⁺ and Ca²⁺), pH 7.4, 150 mM NaCl, 0.05% Sodium Azide and 40% glycerol

Research Areas: Cancer

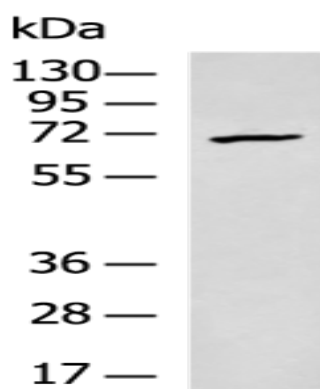
Storage & Shipping: Store at -20°C. Avoid repeated freezing and thawing



Immunohistochemistry analysis of paraffin embedded Human gastric cancer tissue using 217225(CABLES1 Antibody) at a dilution of 1/80(Cytoplasm and Nucleus).



In comparison with the IHC on the left, the same paraffin-embedded Human gastric cancer tissue is first treated with the fusion protein and then with 217225(Anti-CABLES1 Antibody) at dilution 1/80.



Gel: 8%SDS-PAGE, Lysate: 40 μ g;
Lane: Mouse brain tissue lysate;
Primary antibody: 217225(CABLES1 Antibody)
at dilution 1/500;
Secondary antibody: HRP-conjugated Goat
anti rabbit IgG at 1/5000 dilution;
Exposure time: 30 seconds