

## C8ORF44 RABBIT PAB

**Cat.#:** S212516

**Product Name:** Anti-C8orf44 Rabbit Polyclonal Antibody

**Synonyms:**

**UNIPROT ID:** Q96CB5 (Gene Accession - BC014448 )

**Background:** The function of this protein remains unknown.

**Immunogen:** Fusion protein of human C8orf44

**Applications:** ELISA, WB, IHC

**Recommended Dilutions:** IHC: 40-200;WB: 200-1000;ELISA: 5000-10000

**Host Species:** Rabbit

**Clonality:** Rabbit Polyclonal

**Isotype:** Immunogen-specific rabbit IgG

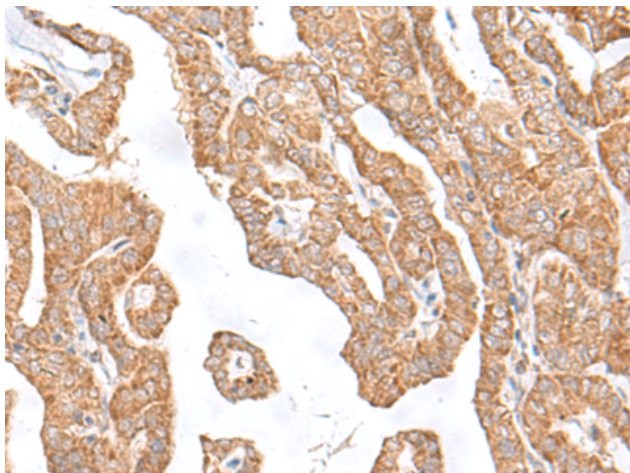
**Purification:** Antigen affinity purification

**Species Reactivity:** Human

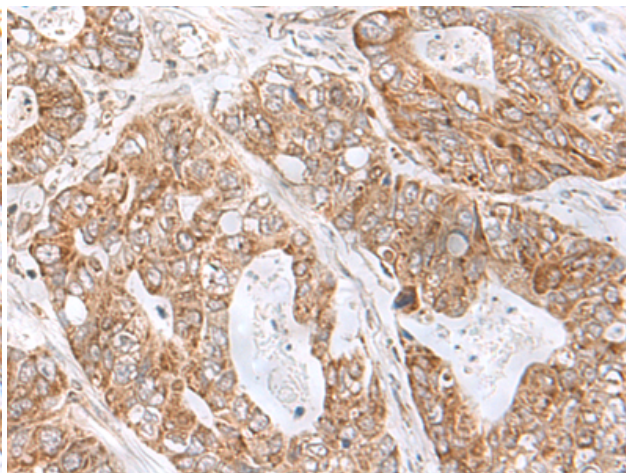
**Constituents:** PBS (without Mg<sup>2+</sup> and Ca<sup>2+</sup>), pH 7.4, 150 mM NaCl, 0.05% Sodium Azide and 40% glycerol

**Research Areas:** Cell Biology

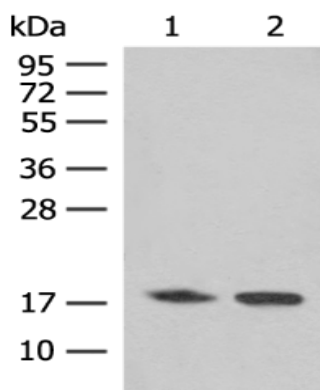
**Storage & Shipping:** Store at -20°C. Avoid repeated freezing and thawing



Immunohistochemistry analysis of paraffin-embedded Human thyroid cancer tissue using 212516(C8orf44 Antibody) at a dilution of 1/35(Cytoplasm).



Immunohistochemistry analysis of paraffin-embedded Human gastric cancer tissue using 212516(Anti-C8orf44 Antibody) at a dilution of 1/35.



Gel: 12%SDS-PAGE, Lysate: 40  $\mu$ g;  
 Lane 1-2: K562 cell, Human kidney tissue lysates;  
 Primary antibody: 212516(C8orf44 Antibody) at dilution 1/250;  
 Secondary antibody: Goat anti rabbit IgG at 1/8000 dilution;  
 Exposure time: 1 minute