

C3ORF38 RABBIT PAB

Cat.#: S218413

Product Name: Anti-C3orf38 Rabbit Polyclonal Antibody

Synonyms:

UNIPROT ID: Q5JPI3 (Gene Accession - BC024188)

Background: May be involved in apoptosis regulation.

Immunogen: Fusion protein of human C3orf38

Applications: ELISA, IHC

Recommended Dilutions: IHC: 100-300; ELISA: 5000-10000

Host Species: Rabbit

Clonality: Rabbit Polyclonal

Isotype: Immunogen-specific rabbit IgG

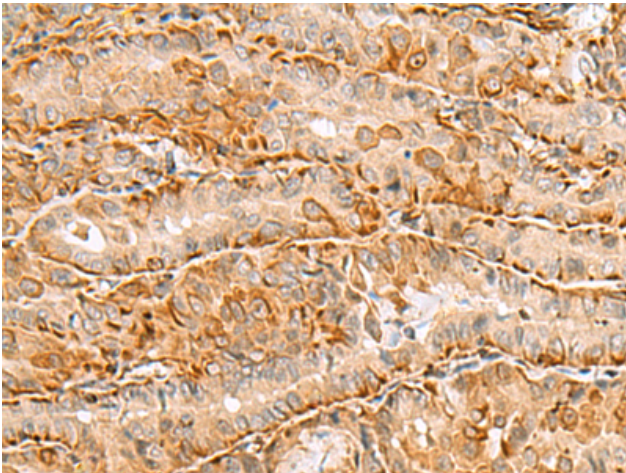
Purification: Antigen affinity purification

Species Reactivity: Human, Mouse, Rat

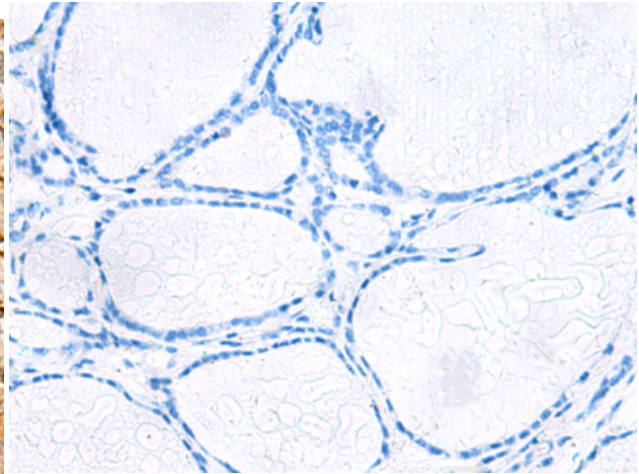
Constituents: PBS (without Mg²⁺ and Ca²⁺), pH 7.4, 150 mM NaCl, 0.05% Sodium Azide and 40% glycerol

Research Areas: Cancer

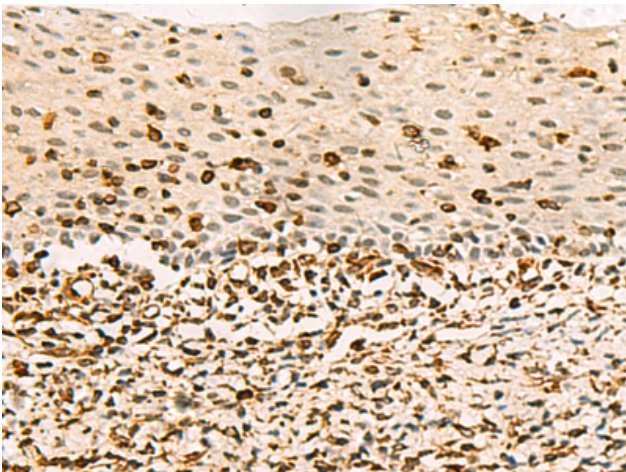
Storage & Shipping: Store at -20°C. Avoid repeated freezing and thawing



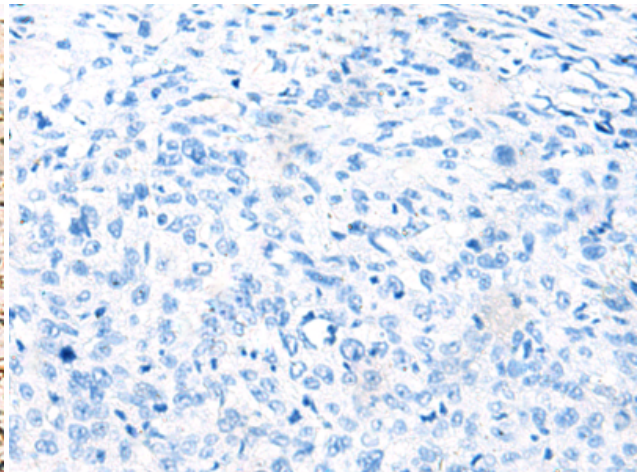
Immunohistochemistry analysis of paraffin embedded Human thyroid cancer tissue using 218413(C3orf38 Antibody) at a dilution of 1/80(Cytoplasm or Nucleus).



In comparison with the IHC on the left, the same paraffin-embedded Human thyroid cancer tissue is first treated with the fusion protein and then with 218413(Anti-C3orf38 Antibody) at dilution 1/80.



The image on the left is immunohistochemistry of paraffin-embedded Human cervical cancer tissue using 218413(Anti-C3orf38 Antibody) at a dilution of 1/80.



In comparison with the IHC on the left, the same paraffin-embedded Human cervical cancer tissue is first treated with fusion protein and then with D224361(Anti-C3orf38 Antibody) at dilution 1/80.