

## C1RL RABBIT PAB

**Cat.#:** N225238

**Product Name:** Anti-C1RL Rabbit pAb

**Synonyms:** Complement C1r subcomponent-like protein (C1r-LP; C1r-like protein; EC 3.4.21.-; C1r-like serine protease analog protein; CLSPa)

**UNIPROT ID:** Q9NZP8

**Background:** Mediates the proteolytic cleavage of HP/haptoglobin in the endoplasmic reticulum.

**Immunogen:** Synthesized peptide derived from human C1RL. at AA range: 371-420

**Applications:** WB,ELISA

**Recommended Dilutions:** WB: 1/500-1/1000 ELISA: 1/10000

**Host Species:** Rabbit

**Clonality:** Rabbit Polyclonal

**Clone ID:** -

**MW:** Calculated MW: 53 kDa; Observed MW: 53 kDa

**Isotype:** IgG

**Purification:** Affinity Purified

**Species Reactivity:** Human

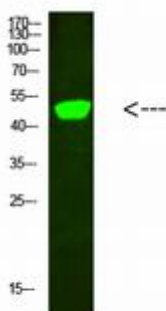
**Conjugation:** Unconjugated

**Modification:** Unmodified

**Constituents:** PBS (without Mg<sup>2+</sup> and Ca<sup>2+</sup>), pH 7.3 containing 50% glycerol, 0.5% BSA and 0.02% sodium azide

**Research Areas:** Immunology

**Storage & Shipping:** Store at -20°C. Avoid repeated freezing and thawing



Western blot analysis of C1RL in hela lysates using C1RL antibody.



# Product Description

Pioneering GTPase and Oncogene Product Development since 2010

---