

C1QTNF2 RABBIT PAB

Cat.#: S222443

Product Name: Anti-C1QTNF2 Rabbit Polyclonal Antibody

Synonyms: CTRP2; zacrp2

UNIPROT ID: Q9BXJ5 (Gene Accession - NP_114114)

Background: Predicted to enable identical protein binding activity and signaling receptor binding activity. Predicted to be involved in regulation of lipid metabolic process. Predicted to act upstream of or within positive regulation of MAPK cascade; positive regulation of glucose import; and positive regulation of small molecule metabolic process. Predicted to be located in extracellular space. Predicted to be part of protein-containing complex.

Immunogen: Synthetic peptide of human C1QTNF2

Applications: ELISA, IHC

Recommended Dilutions: IHC: 50-100; ELISA: 5000-10000

Host Species: Rabbit

Clonality: Rabbit Polyclonal

Isotype: Immunogen-specific rabbit IgG

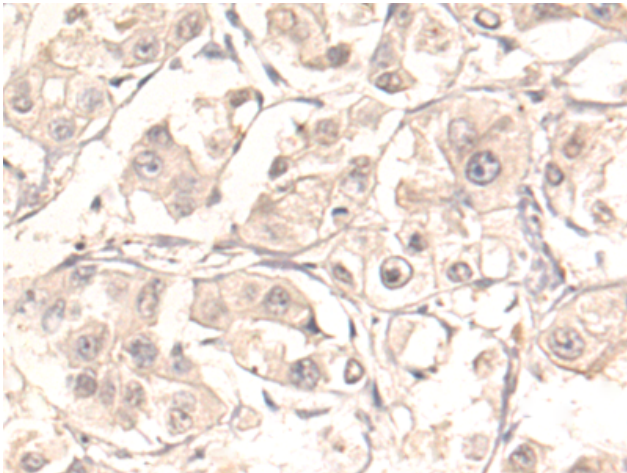
Purification: Antigen affinity purification

Species Reactivity: Human, Mouse

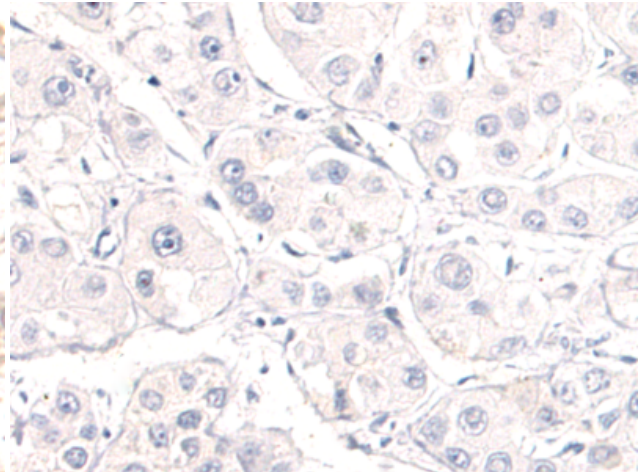
Constituents: PBS (without Mg²⁺ and Ca²⁺), pH 7.4, 150 mM NaCl, 0.05% Sodium Azide and 40% glycerol

Research Areas: Signal Transduction

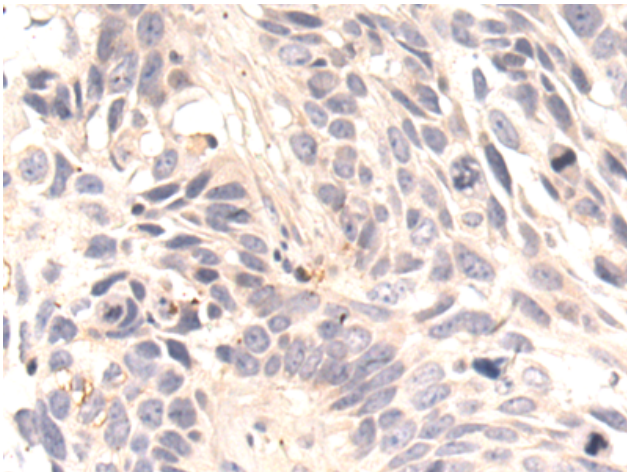
Storage & Shipping: Store at -20°C. Avoid repeated freezing and thawing



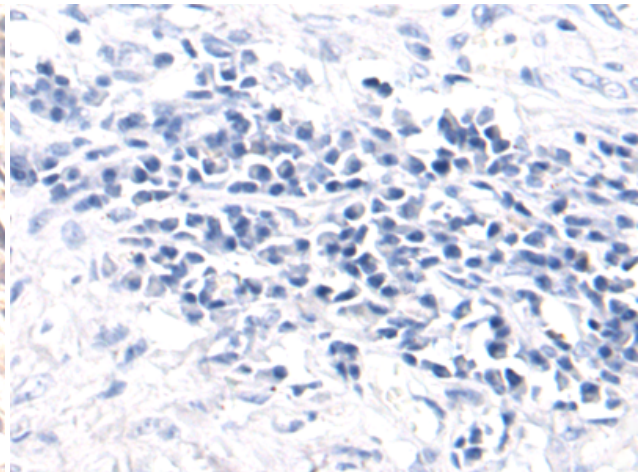
Immunohistochemistry analysis of paraffin embedded Human liver cancer tissue using 222443(C1QTNF2 Antibody) at a dilution of 1/50(Secreted).



In comparison with the IHC on the left, the same paraffin-embedded Human liver cancer tissue is first treated with the synthetic peptide and then with 222443(Anti-C1QTNF2 Antibody) at dilution 1/50.



The image on the left is immunohistochemistry of paraffin-embedded Human lung cancer tissue using 222443(Anti-C1QTNF2 Antibody) at a dilution of 1/50.



In comparison with the IHC on the left, the same paraffin-embedded Human lung cancer tissue is first treated with synthetic peptide and then with D264616(Anti-C1QTNF2 Antibody) at dilution 1/50.