

C14ORF180 RABBIT PAB

Cat.#: S222000

Product Name: Anti-C14orf180 Rabbit Polyclonal Antibody

Synonyms: NRAC; C14orf77

UNIPROT ID: Q8N912 (Gene Accession - NP_001008404)

Background: C14orf180 is a multi-pass membrane protein. The function of the C14orf180 protein is not known.

Immunogen: Synthetic peptide of human C14orf180

Applications: ELISA, IHC

Recommended Dilutions: IHC: 25-100; ELISA: 5000-10000

Host Species: Rabbit

Clonality: Rabbit Polyclonal

Isotype: Immunogen-specific rabbit IgG

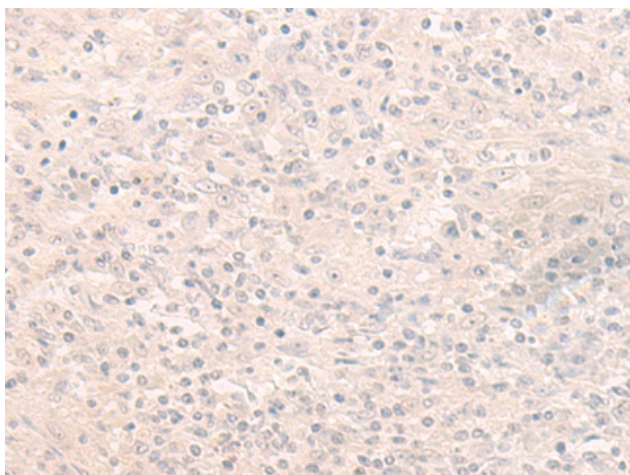
Purification: Antigen affinity purification

Species Reactivity: Human

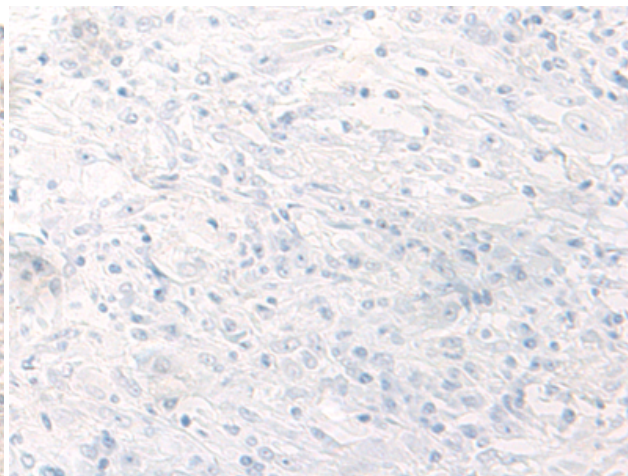
Constituents: PBS (without Mg²⁺ and Ca²⁺), pH 7.4, 150 mM NaCl, 0.05% Sodium Azide and 40% glycerol

Research Areas: Cell Biology

Storage & Shipping: Store at -20°C. Avoid repeated freezing and thawing



Immunohistochemistry analysis of paraffin embedded Human liver cancer tissue using 222000(C14orf180 Antibody) at a dilution of 1/30(Cell membrane).



In comparison with the IHC on the left, the same paraffin-embedded Human liver cancer tissue is first treated with the synthetic peptide and then with 222000(Anti-C14orf180 Antibody) at dilution 1/30.