

C12ORF40 RABBIT PAB

Cat.#: S218384

Product Name: Anti-C12orf40 Rabbit Polyclonal Antibody

Synonyms: HEL-206; HEL-S-94

UNIPROT ID: Q86WS4 (Gene Accession - BC048120)

Background: Encoding over 1,100 genes within 132 million bases, chromosome 12 makes up about 4.5% of the human genome. A number of skeletal deformities are linked to chromosome 12 including hypochondrogenesis, achondrogenesis and Kniest dysplasia. Noonan syndrome, which includes heart and facial developmental defects among the primary symptoms, is caused by a mutant form of PTPN11 gene product, SH-PTP2. Chromosome 12 is also home to a homeobox gene cluster which encodes crucial transcription factors for morphogenesis, and the natural killer complex gene cluster encoding C-type lectin proteins which mediate the NK cell response to MHC I interaction. Trisomy 12p leads to facial development defects, seizure disorders and a host of other symptoms varying in severity depending on the extent of mosaicism and is most severe in cases of complete trisomy. The C12orf40 gene product has been provisionally designated C12orf40 pending further characterization.

Immunogen: Fusion protein of human C12orf40

Applications: ELISA, IHC

Recommended Dilutions: IHC: 40-200; ELISA: 5000-10000

Host Species: Rabbit

Clonality: Rabbit Polyclonal

Isotype: Immunogen-specific rabbit IgG

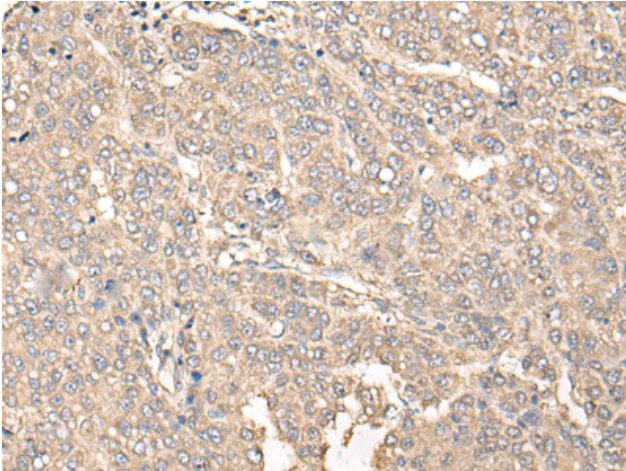
Purification: Antigen affinity purification

Species Reactivity: Human

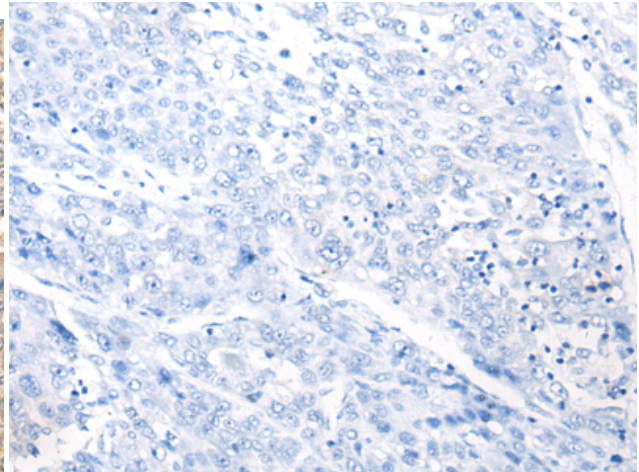
Constituents: PBS (without Mg²⁺ and Ca²⁺), pH 7.4, 150 mM NaCl, 0.05% Sodium Azide and 40% glycerol

Research Areas: Cell Biology

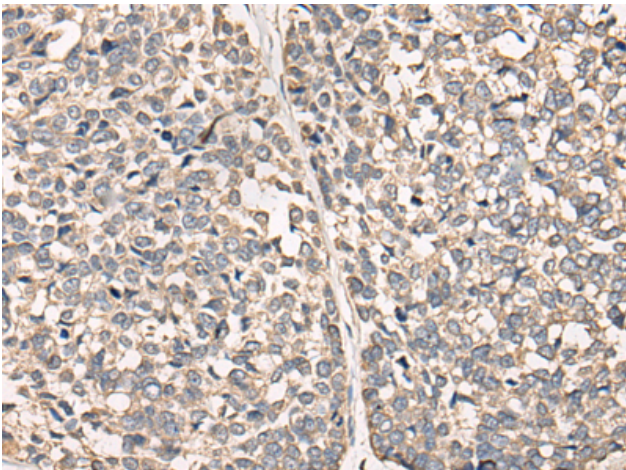
Storage & Shipping: Store at -20°C. Avoid repeated freezing and thawing



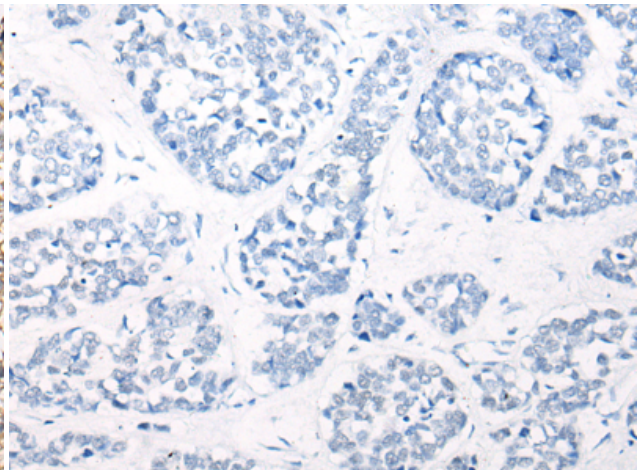
Immunohistochemistry analysis of paraffin embedded Human liver cancer tissue using 218384(C12orf40 Antibody) at a dilution of 1/50(Cytoplasm).



In comparison with the IHC on the left, the same paraffin-embedded Human liver cancer tissue is first treated with the fusion protein and then with 218384(Anti-C12orf40 Antibody) at dilution 1/50.



The image on the left is immunohistochemistry of paraffin-embedded Human esophagus cancer tissue using 218384(Anti-C12orf40 Antibody) at a dilution of 1/50.



In comparison with the IHC on the left, the same paraffin-embedded Human esophagus cancer tissue is first treated with fusion protein and then with D224306(Anti-C12orf40 Antibody) at dilution 1/50.