

## BZW2 RABBIT PAB

**Cat.#:** S218692

**Product Name:** Anti-BZW2 Rabbit Polyclonal Antibody

**Synonyms:** MST017; HSPC028; MSTP017

**UNIPROT ID:** Q9Y6E2 (Gene Accession - BC003056 )

**Background:** May be involved in neuronal differentiation.

**Immunogen:** Fusion protein of human BZW2

**Applications:** ELISA, IHC

**Recommended Dilutions:** IHC: 25-100; ELISA: 5000-10000

**Host Species:** Rabbit

**Clonality:** Rabbit Polyclonal

**Isotype:** Immunogen-specific rabbit IgG

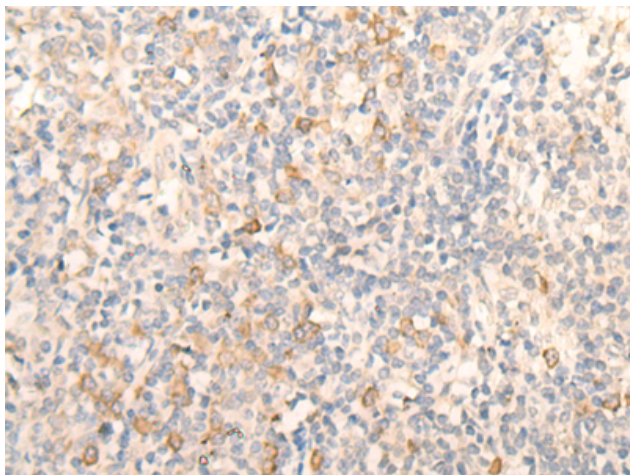
**Purification:** Antigen affinity purification

**Species Reactivity:** Human, Mouse, Rat

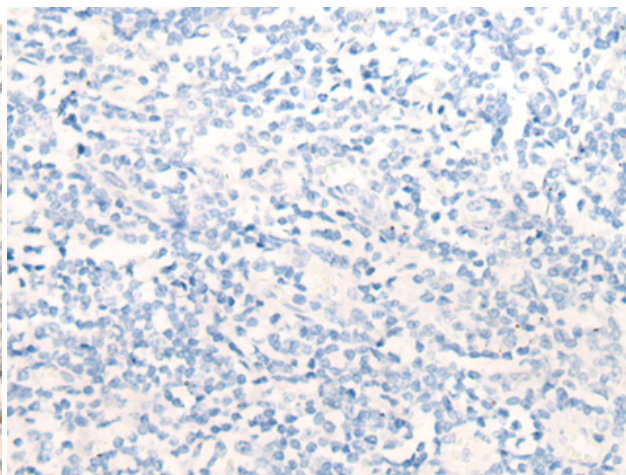
**Constituents:** PBS (without Mg<sup>2+</sup> and Ca<sup>2+</sup>), pH 7.4, 150 mM NaCl, 0.05% Sodium Azide and 40% glycerol

**Research Areas:** Cancer, Neuroscience, Developmental Biology

**Storage & Shipping:** Store at -20°C. Avoid repeated freezing and thawing



Immunohistochemistry analysis of paraffin embedded Human tonsil tissue using 218692(BZW2 Antibody) at a dilution of 1/20(Cytoplasm).



In comparison with the IHC on the left, the same paraffin-embedded Human tonsil tissue is first treated with the fusion protein and then with 218692(Anti-BZW2 Antibody) at dilution 1/20.