

BRMS1L RABBIT PAB

Cat.#: S218055

Product Name: Anti-BRMS1L Rabbit Polyclonal Antibody

Synonyms: BRMS1

UNIPROT ID: Q5PSV4 (Gene Accession - BC006250)

Background: The protein encoded by this gene shows sequence similarity to the human breast carcinoma metastasis suppressor (BRMS1) protein and the mammalian Sds3 (suppressor of defective silencing 3) proteins. This protein is a component of the mSin3a family of histone deacetylase complexes (HDAC).

Immunogen: Fusion protein of human BRMS1L

Applications: ELISA, IHC

Recommended Dilutions: IHC: 30-150; ELISA: 5000-10000

Host Species: Rabbit

Clonality: Rabbit Polyclonal

Isotype: Immunogen-specific rabbit IgG

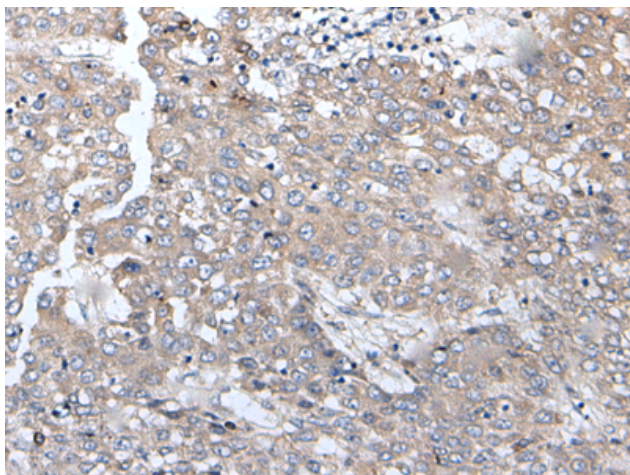
Purification: Antigen affinity purification

Species Reactivity: Human, Mouse

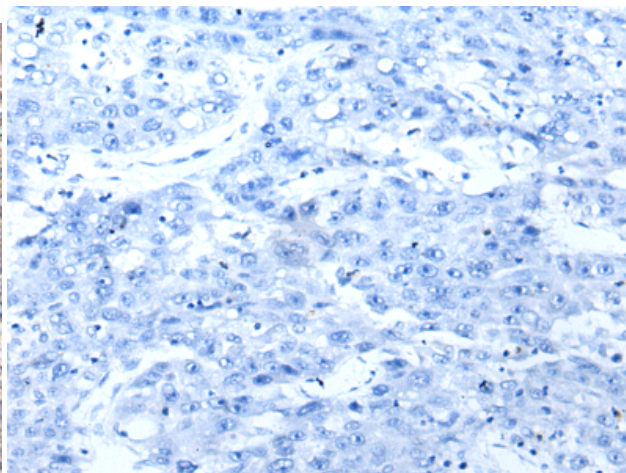
Constituents: PBS (without Mg²⁺ and Ca²⁺), pH 7.4, 150 mM NaCl, 0.05% Sodium Azide and 40% glycerol

Research Areas: Epigenetics and Nuclear Signaling

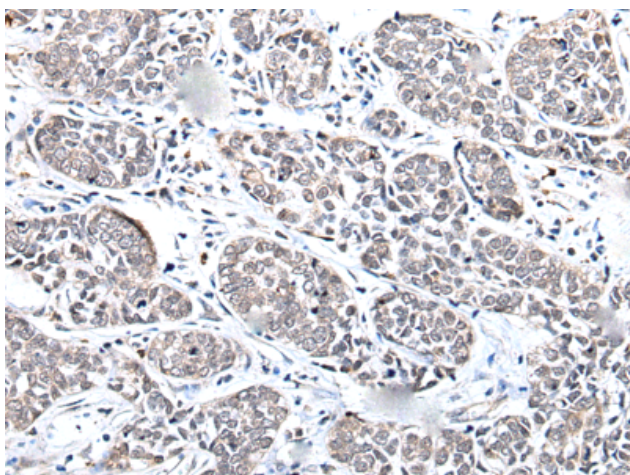
Storage & Shipping: Store at -20°C. Avoid repeated freezing and thawing



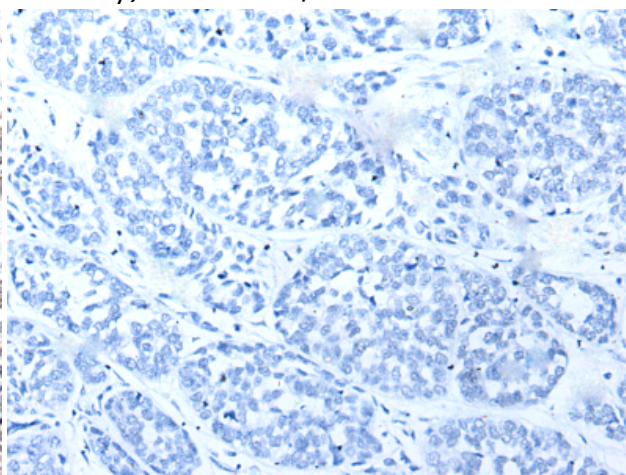
Immunohistochemistry analysis of paraffin embedded Human liver cancer tissue using 218055 (BRMSIL Antibody) at a dilution of 1/45 (Cytoplasm or Nucleus).



In comparison with the IHC on the left, the same paraffin-embedded Human liver cancer tissue is first treated with the fusion protein and then with 218055 (Anti-BRMSIL Antibody) at dilution 1/45.



The image on the left is immunohistochemistry of paraffin-embedded Human esophagus cancer tissue using 218055 (Anti-BRMSIL Antibody) at a dilution of 1/45.



In comparison with the IHC on the left, the same paraffin-embedded Human esophagus cancer tissue is first treated with fusion protein and then with D223624 (Anti-BRMSIL Antibody) at dilution 1/45.