

BRF2 RABBIT PAB

Cat.#: S218371

Product Name: Anti-BRF2 Rabbit Polyclonal Antibody

Synonyms: BRFU; TFIIB50

UNIPROT ID: Q9HAW0 (Gene Accession - BC010648)

Background: This gene encodes one of the multiple subunits of the RNA polymerase III transcription factor complex required for transcription of genes with promoter elements upstream of the initiation site. The product of this gene, a TFIIB-like factor, is directly recruited to the TATA-box of polymerase III small nuclear RNA gene promoters through its interaction with the TATA-binding protein.

Immunogen: Fusion protein of human BRF2

Applications: ELISA, IHC

Recommended Dilutions: IHC: 30-150; ELISA: 5000-10000

Host Species: Rabbit

Clonality: Rabbit Polyclonal

Isotype: Immunogen-specific rabbit IgG

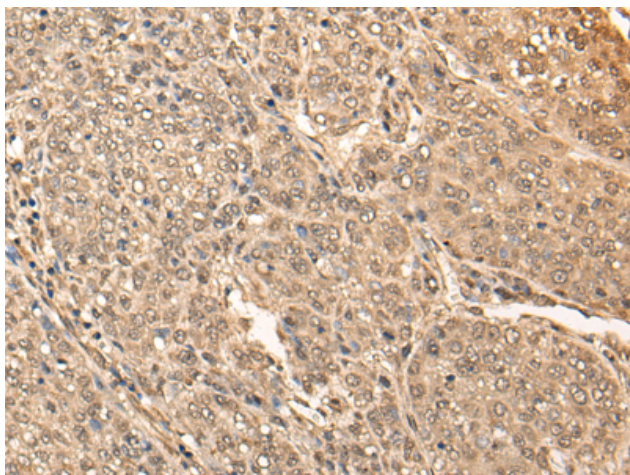
Purification: Antigen affinity purification

Species Reactivity: Human

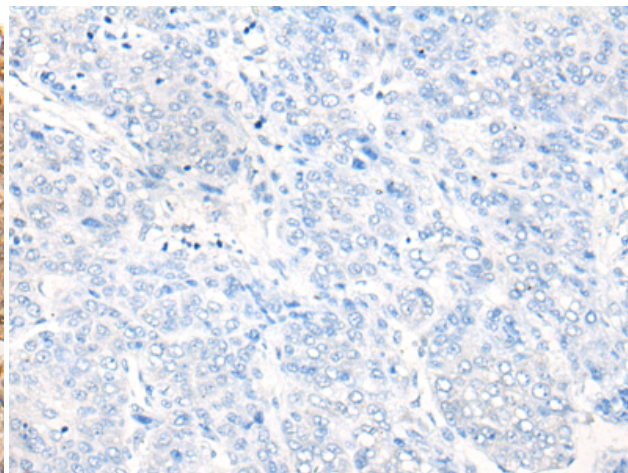
Constituents: PBS (without Mg²⁺ and Ca²⁺), pH 7.4, 150 mM NaCl, 0.05% Sodium Azide and 40% glycerol

Research Areas: Epigenetics and Nuclear Signaling

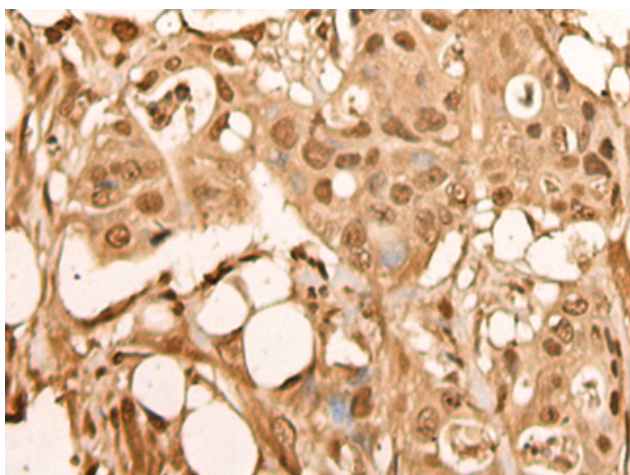
Storage & Shipping: Store at -20°C. Avoid repeated freezing and thawing



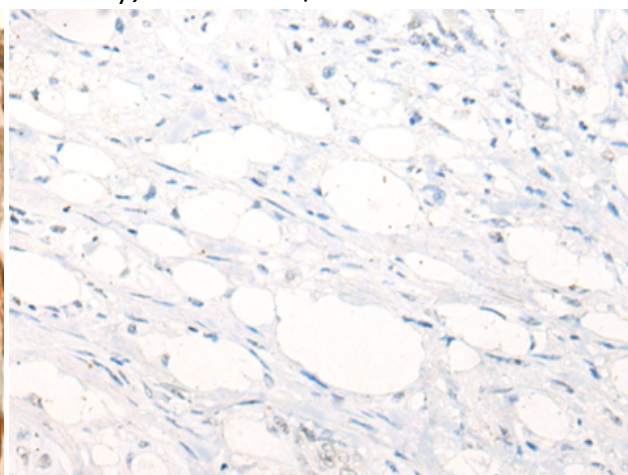
Immunohistochemistry analysis of paraffin embedded Human liver cancer tissue using 218371 (BRF2 Antibody) at a dilution of 1/40 (Nucleus).



In comparison with the IHC on the left, the same paraffin-embedded Human liver cancer tissue is first treated with the fusion protein and then with 218371 (Anti-BRF2 Antibody) at dilution 1/40.



The image on the left is immunohistochemistry of paraffin-embedded Human colorectal cancer tissue using 218371 (Anti-BRF2 Antibody) at a dilution of 1/40.



In comparison with the IHC on the left, the same paraffin-embedded Human colorectal cancer tissue is first treated with fusion protein and then with D224275 (Anti-BRF2 Antibody) at dilution 1/40.