

BOVINE SERUM ALBUMIN RABBIT PAB

Cat.#: N225517

Product Name: Anti-Bovine Serum Albumin Rabbit pAb

Synonyms: BSA; ALB; Albumin; HSA; PRO0883; Serum Albumin

UNIPROT ID: P02769

Background: Serum albumin, the main protein of plasma, has a good binding capacity for water, Ca²⁺, Na⁺, K⁺, fatty acids, hormones, bilirubin and drugs. Its main function is the regulation of the colloidal osmotic pressure of blood. Major zinc transporter in plasma, typically binds about 80% of all plasma zinc.

Immunogen: Recombinant Protein of Bovine Serum Albumin

Applications: WB,ELISA

Recommended Dilutions: WB: 1/500-1/1000 ELISA: 1/10000

Host Species: Rabbit

Clonality: Rabbit Polyclonal

Clone ID: -

MW: Calculated MW: 69 kDa; Observed MW: 66 kDa

Isotype: IgG

Purification: Affinity Purified

Species Reactivity: Bovine

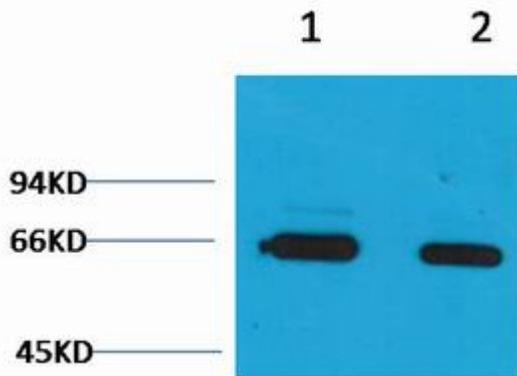
Conjugation: Unconjugated

Modification: Unmodified

Constituents: PBS (without Mg²⁺ and Ca²⁺), pH 7.3 containing 50% glycerol, 0.5% BSA and 0.02% sodium azide

Research Areas: Cardiovascular

Storage & Shipping: Store at -20°C. Avoid repeated freezing and thawing



Western blot analysis of Bovine Serum Albumin in Bovine Serum Albumin lysates using Bovine Serum Albumin antibody.