

BORCS8 RABBIT PAB

Cat.#: S215235

Product Name: Anti-BORCS8 Rabbit Polyclonal Antibody

Synonyms: MEF2BNB

UNIPROT ID: Q96FH0 (Gene Accession - NP_001139256)

Background: BORCS8, also known as BORCS8, the gene represents numerous read-through transcripts that span geneID:729991 and 100271849. Many read-through transcripts are predicted to be nonsense-mediated decay (NMD) candidates, and are thought to be non-coding. Some transcripts are predicted to be capable of translation reinitiation at a downstream AUG, resulting in expression of at least one isoform of myocyte enhancer factor 2B (MEF2B) from this read-through locus.

Immunogen: Synthetic peptide of human BORCS8

Applications: ELISA, IHC

Recommended Dilutions: IHC: 35-200; ELISA: 5000-10000

Host Species: Rabbit

Clonality: Rabbit Polyclonal

Isotype: Immunogen-specific rabbit IgG

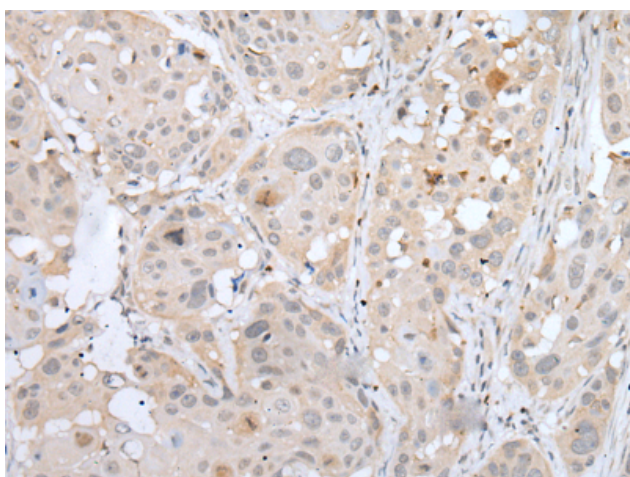
Purification: Antigen affinity purification

Species Reactivity: Human

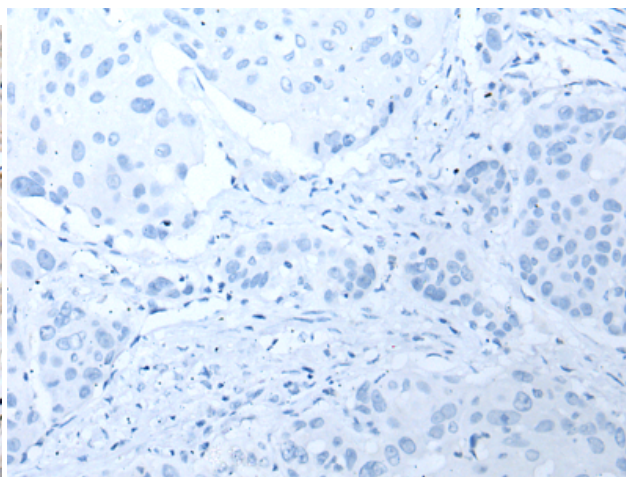
Constituents: PBS (without Mg²⁺ and Ca²⁺), pH 7.4, 150 mM NaCl, 0.05% Sodium Azide and 40% glycerol

Research Areas: Cell Biology

Storage & Shipping: Store at -20°C. Avoid repeated freezing and thawing



Immunohistochemistry analysis of paraffin embedded Human esophagus cancer tissue using 215235(BORCS8 Antibody) at a dilution of 1/50(Cytoplasm and Cell membrane).



In comparison with the IHC on the left, the same paraffin-embedded Human esophagus cancer tissue is first treated with the synthetic peptide and then with 215235(Anti-BORCS8 Antibody) at dilution 1/50.