

BORA RABBIT MAB

Cat.#: N261932

Product Name: Anti-Bora Rabbit Monoclonal Antibody

Synonyms: C13orf34

UNIPROT ID: Q6PGQ7

Background: Required for the activation of AURKA at the onset of mitosis.

Immunogen: Recombinant protein of human Bora

Applications: WB,IP

Recommended Dilutions: WB: 1/500-1/1000 IP: 1/20

Host Species: Rabbit

Clonality: Rabbit Monoclonal

Clone ID: R06-5B4

MW: Calculated MW: 61 kDa; Observed MW: 61 kDa

Isotype: IgG

Purification: Affinity Purified

Species Reactivity: Human,Mouse,Rat

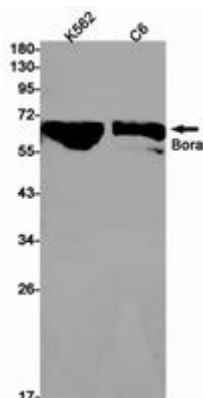
Conjugation: Unconjugated

Modification: Unmodified

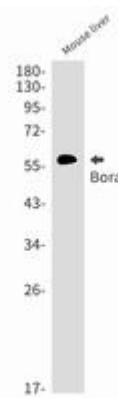
Constituents: PBS (without Mg²⁺ and Ca²⁺), pH 7.3 containing 50% glycerol, 0.5% BSA and 0.02% sodium azide

Research Areas: Cell Biology

Storage & Shipping: Store at -20°C. Avoid repeated freezing and thawing



Western blot analysis of Bora in K562, C6 lysates using Bora antibody.



Western blot analysis of Bora in mouse liver lysates using Bora antibody.



Product Description

Pioneering GTPase and Oncogene Product Development since 2010
