

## BOLA1 RABBIT PAB

**Cat.#:** S218365

**Product Name:** Anti-BOLA1 Rabbit Polyclonal Antibody

**Synonyms:** CGI-143

**UNIPROT ID:** Q9Y3E2 (Gene Accession - BC063405 )

**Background:** BOLA1 (BoLA-like protein 1), also known as CGI-143, is a member of the BoLA/yrbA family of proteins. Members of this family are homologs of the Escherichia coli protein, BoLA. BoLA-like proteins are evolutionarily conserved from prokaryotes to eukaryotes and are believed to play a role in cell-cycle regulation or cell proliferation possibly via some sort of transcription regulation of other genes. In addition, BoLA-like proteins may contain nucleic-acid binding properties, as is suggested by a fold structure that is similar to the KH-fold, a motif known to participate in nucleic-acid binding. Characteristic of BoLA-like proteins which typically consist of approximately 100 amino acids, BOLA1 is a 137 amino acid protein.

**Immunogen:** Full length fusion protein

**Applications:** ELISA, IHC

**Recommended Dilutions:** IHC: 40-200; ELISA: 5000-10000

**Host Species:** Rabbit

**Clonality:** Rabbit Polyclonal

**Isotype:** Immunogen-specific rabbit IgG

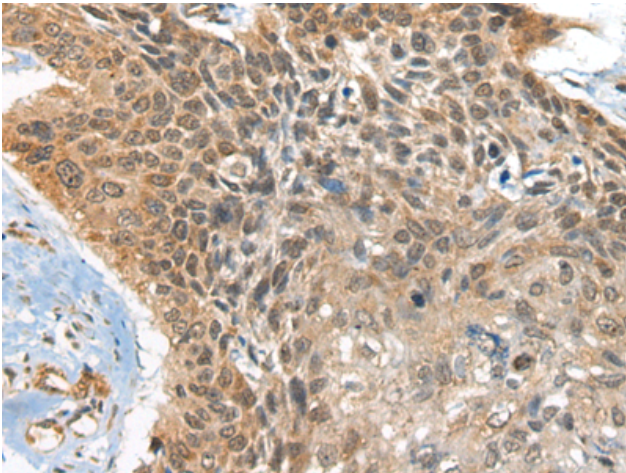
**Purification:** Antigen affinity purification

**Species Reactivity:** Human, Mouse

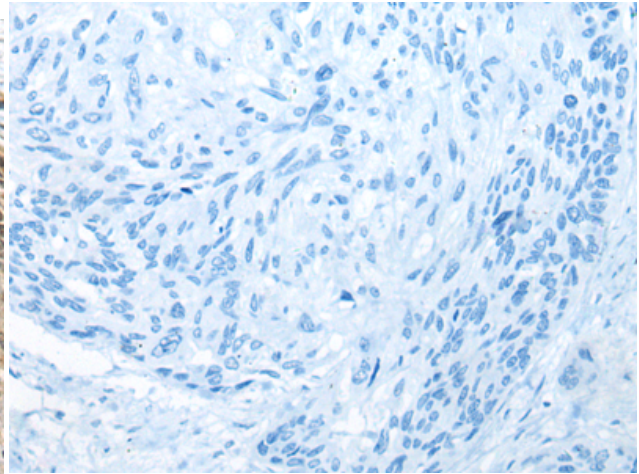
**Constituents:** PBS (without Mg<sup>2+</sup> and Ca<sup>2+</sup>), pH 7.4, 150 mM NaCl, 0.05% Sodium Azide and 40% glycerol

**Research Areas:** Cell Biology

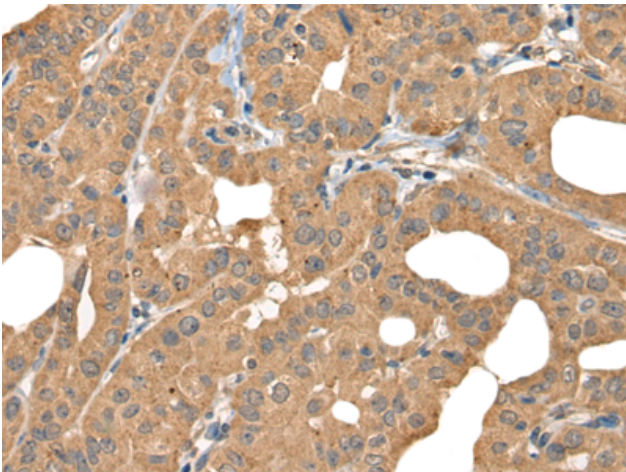
**Storage & Shipping:** Store at -20°C. Avoid repeated freezing and thawing



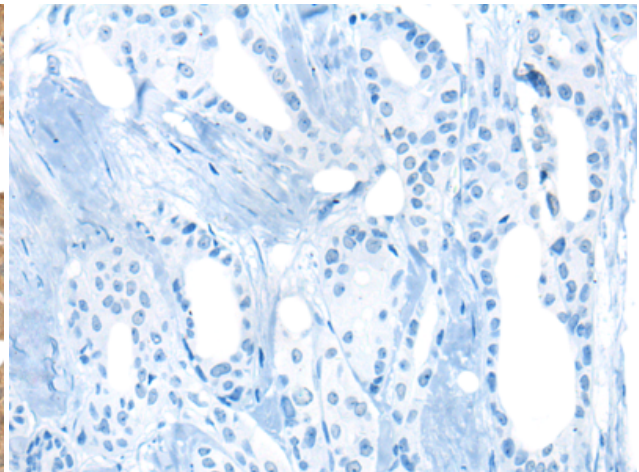
Immunohistochemistry analysis of paraffin embedded Human esophagus cancer tissue using 218365(BOLA1 Antibody) at a dilution of 1/35(Nucleus or Cytoplasm).



In comparison with the IHC on the left, the same paraffin-embedded Human esophagus cancer tissue is first treated with the fusion protein and then with 218365(Anti-BOLA1 Antibody) at dilution 1/35.



The image on the left is immunohistochemistry of paraffin-embedded Human thyroid cancer tissue using 218365(Anti-BOLA1 Antibody) at a dilution of 1/35.



In comparison with the IHC on the left, the same paraffin-embedded Human thyroid cancer tissue is first treated with fusion protein and then with D224266(Anti-BOLA1 Antibody) at dilution 1/35.