

BMP8A RABBIT PAB

Cat.#: N225010

Product Name: Anti-BMP8A Rabbit pAb

Synonyms: BMP8A; Bone morphogenetic protein 8A; BMP-8A

UNIPROT ID: Q7Z5Y6

Background: Induces cartilage and bone formation.

Immunogen: The antiserum was produced against synthesized peptide derived from the Internal region of human BMP8A. AA range:241-290

Applications: WB,IHC-P,ELISA

Recommended Dilutions: WB: 1/500-1/1000 IHC: 1/50-1/100 ELISA: 1/10000

Host Species: Rabbit

Clonality: Rabbit Polyclonal

Clone ID: -

MW: Calculated MW: 45 kDa; Observed MW: 45 kDa

Isotype: IgG

Purification: Affinity Purified

Species Reactivity: Human,Mouse,Rat

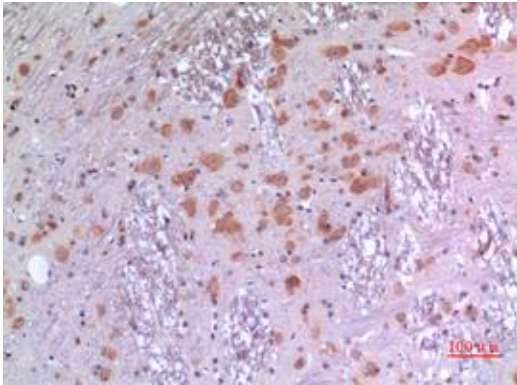
Conjugation: Unconjugated

Modification: Unmodified

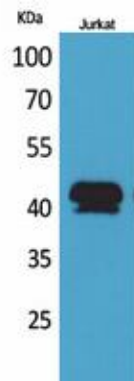
Constituents: PBS (without Mg²⁺ and Ca²⁺), pH 7.3 containing 50% glycerol, 0.5% BSA and 0.02% sodium azide

Research Areas: Stem Cells

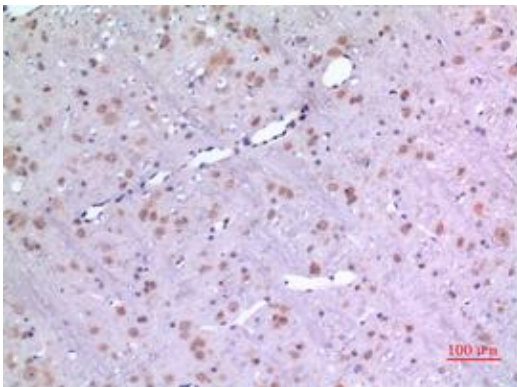
Storage & Shipping: Store at -20°C. Avoid repeated freezing and thawing



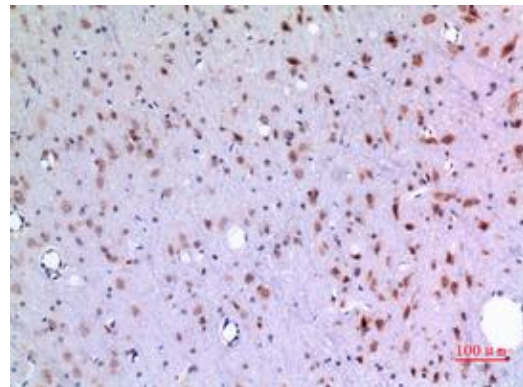
Immunohistochemistry analysis of paraffin-embedded rat brain using BMP8A antibody. High-pressure and temperature Sodium Citrate pH 6.0 was used for antigen retrieval.



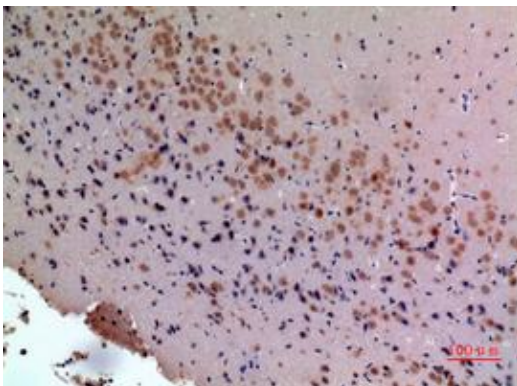
Western blot analysis of BMP8A in Jurkat lysates using BMP8A antibody.



Immunohistochemistry analysis of paraffin-embedded rat brain using BMP8A antibody. High-pressure and temperature Sodium Citrate pH 6.0 was used for antigen retrieval.



Immunohistochemistry analysis of paraffin-embedded rat brain using BMP8A antibody. High-pressure and temperature Sodium Citrate pH 6.0 was used for antigen retrieval.



Immunohistochemistry analysis of paraffin-embedded mouse brain using BMP8A antibody. High-pressure and temperature Sodium Citrate pH 6.0 was used for antigen retrieval.



Product Description

Pioneering GTPase and Oncogene Product Development since 2010
