

## BMP2 RABBIT MAB

**Cat.#:** N261928

**Product Name:** Anti-BMP2 Rabbit Monoclonal Antibody

**Synonyms:** BMP2; BMP2A; Bone morphogenetic protein 2; BMP-2; Bone morphogenetic protein 2A; BMP-2A

**UNIPROT ID:** P12643

**Background:** Bone morphogenetic proteins (BMPs) are members of the TGF $\beta$  superfamily. BMPs are involved in the induction of cartilage and bone formation. Induces cartilage and bone formation.

**Immunogen:** Recombinant protein of human BMP2

**Applications:** WB, ICC/IF

**Recommended Dilutions:** WB: 1/500-1/1000 IF: 1/50-1/200

**Host Species:** Rabbit

**Clonality:** Rabbit Monoclonal

**Clone ID:** R03-3H9

**MW:** Calculated MW: 45 kDa; Observed MW: 30 kDa

**Isotype:** IgG

**Purification:** Affinity Purified

**Species Reactivity:** Human

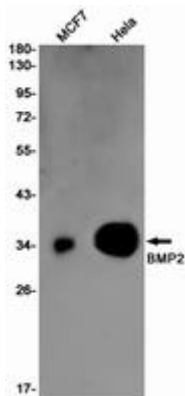
**Conjugation:** Unconjugated

**Modification:** Unmodified

**Constituents:** PBS (without Mg<sup>2+</sup> and Ca<sup>2+</sup>), pH 7.3 containing 50% glycerol, 0.5% BSA and 0.02% sodium azide

**Research Areas:** Cancer

**Storage & Shipping:** Store at -20°C. Avoid repeated freezing and thawing



Western blot analysis of BMP2 in MCF-7, HeLa lysates using BMP2 antibody.



# Product Description

Pioneering GTPase and Oncogene Product Development since 2010

---