

BMP11 RABBIT PAB

Cat.#: N225771

Product Name: Anti-BMP11 Rabbit pAb

Synonyms: GDF11; BMP11; Bone morphogenetic protein 11; GDF-11; BMP-11

UNIPROT ID: O95390

Background: Secreted signal that acts globally to specify positional identity along the anterior/posterior axis during development. Play critical roles in patterning both mesodermal and neural tissues and in establishing the skeletal pattern.

Immunogen: A synthesized peptide derived from human BMP11

Applications: WB,IHC-P,ICC/IF

Recommended Dilutions: WB: 1/500-1/1000 IHC: 1/50-1/100 IF: 1/50-1/200

Host Species: Rabbit

Clonality: Rabbit Polyclonal

Clone ID: -

MW: Calculated MW: 45 kDa; Observed MW: 45 kDa

Isotype: IgG

Purification: Affinity Chromatography

Species Reactivity: Human,Rat

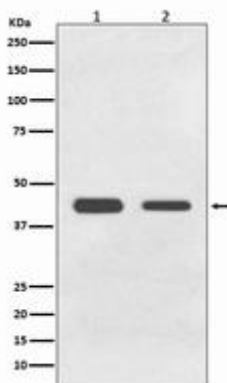
Conjugation: Unconjugated

Modification: Unmodified

Constituents: PBS (without Mg²⁺ and Ca²⁺), pH 7.3 containing 50% glycerol, 0.5% BSA and 0.02% sodium azide

Research Areas: Signal Transduction

Storage & Shipping: Store at -20°C. Avoid repeated freezing and thawing



Western blot analysis of BMP11 in (1) HeLa lysates; (2) C6 lysates using BMP11 antibody.



Product Description

Pioneering GTPase and Oncogene Product Development since 2010
