

## BLOC1S6 RABBIT PAB

**Cat.#:** S219223

**Product Name:** Anti-BLOC1S6 Rabbit Polyclonal Antibody

**Synonyms:** PA; HPS9; PLDN; BLOS6; PALLID

**UNIPROT ID:** Q9UL45 (Gene Accession - BC004819 )

**Background:** The protein encoded by this gene may play a role in intracellular vesicle trafficking. It interacts with Syntaxin 13 which mediates intracellular membrane fusion. Mutations in this gene cause symptoms associated with Hermansky-Pudlak syndrome-9. Alternative splicing results in multiple transcript variants. A pseudogene related to this gene is located on the X chromosome.

**Immunogen:** Fusion protein of human BLOC1S6

**Applications:** ELISA, WB, IHC

**Recommended Dilutions:** IHC: 100-300;WB: 1000-5000;ELISA: 5000-10000

**Host Species:** Rabbit

**Clonality:** Rabbit Polyclonal

**Isotype:** Immunogen-specific rabbit IgG

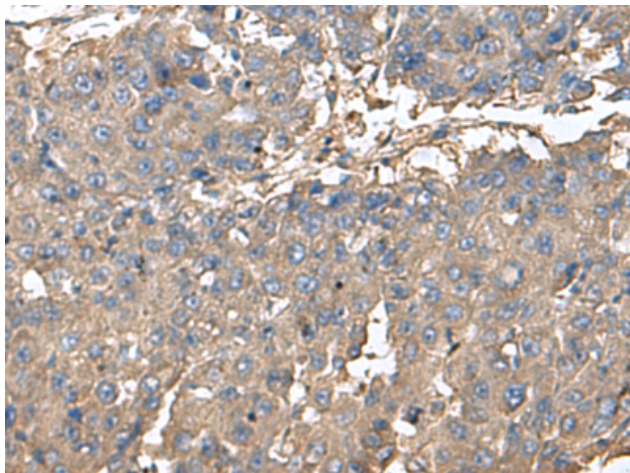
**Purification:** Antigen affinity purification

**Species Reactivity:** Human, Mouse, Rat

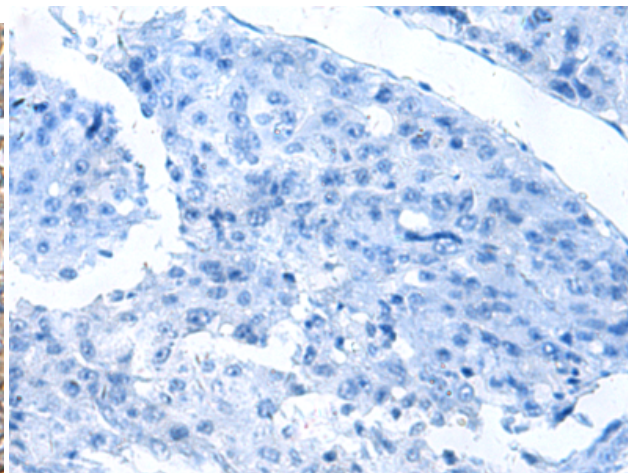
**Constituents:** PBS (without Mg<sup>2+</sup> and Ca<sup>2+</sup>), pH 7.4, 150 mM NaCl, 0.05% Sodium Azide and 40% glycerol

**Research Areas:** Signal Transduction

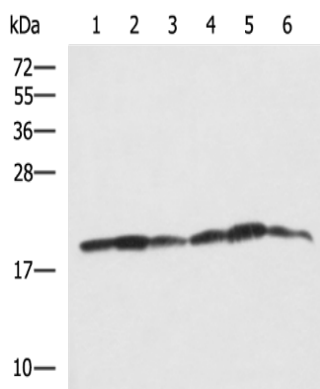
**Storage & Shipping:** Store at -20°C. Avoid repeated freezing and thawing



Immunohistochemistry analysis of paraffin embedded Human liver cancer tissue using 219223(BLOC1S6 Antibody) at a dilution of 1/95(Cytoplasm).



In comparison with the IHC on the left, the same paraffin-embedded Human liver cancer tissue is first treated with the fusion protein and then with 219223(Anti-BLOC1S6 Antibody) at dilution 1/95.



Gel: 12%SDS-PAGE, Lysate: 40  $\mu$ g;  
Lane 1-6: 231, HeLa, Jurkat, 293T, K562 and HepG2 cell lysates;  
Primary antibody: 219223(BLOC1S6 Antibody) at dilution 1/650;  
Secondary antibody: HRP-conjugated Goat anti rabbit IgG at 1/5000 dilution;  
Exposure time: 5 seconds