

BETA IV TUBULIN RABBIT MAB

Cat.#: N261923

Product Name: Anti-beta IV Tubulin Rabbit Monoclonal Antibody

Synonyms: DYT4; TUBB4; beta-5

UNIPROT ID: P04350

Background: Tubulin is the major constituent of microtubules. It binds two moles of GTP, one at an exchangeable site on the beta chain and one at a non-exchangeable site on the alpha chain.

Immunogen: A synthetic peptide of human beta IV Tubulin

Applications: WB,IHC-F,IHC-P,ICC/IF

Recommended Dilutions: WB: 1/500-1/1000 IHC: 1/50-1/100 IF: 1/50-1/200

Host Species: Rabbit

Clonality: Rabbit Monoclonal

Clone ID: R06-6A5

MW: Calculated MW: 50 kDa; Observed MW: 50 kDa

Isotype: IgG

Purification: Affinity Purified

Species Reactivity: Human,Mouse,Rat

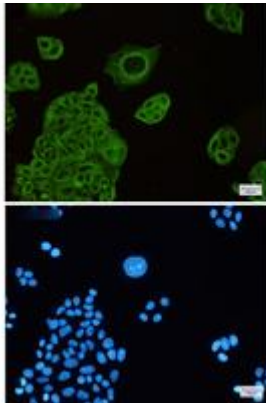
Conjugation: Unconjugated

Modification: Unmodified

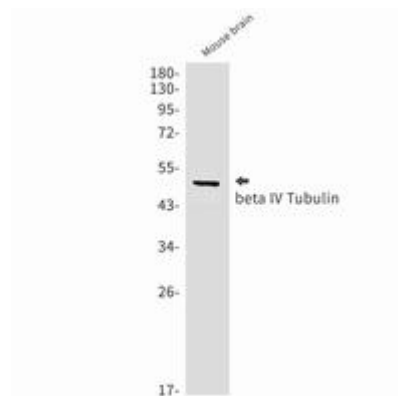
Constituents: PBS (without Mg²⁺ and Ca²⁺), pH 7.3 containing 50% glycerol, 0.5% BSA and 0.02% sodium azide

Research Areas: Tags & Cell Markers

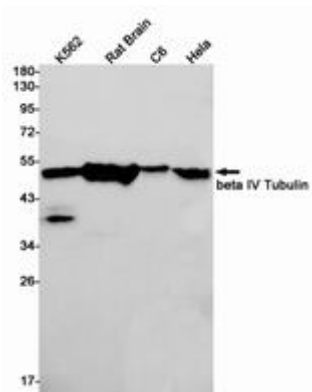
Storage & Shipping: Store at -20°C. Avoid repeated freezing and thawing



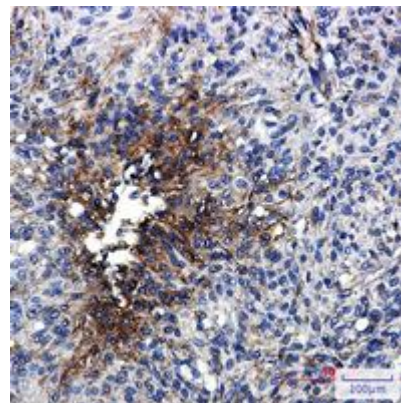
Immunocytochemistry analysis of beta IV Tubulin (green) in HeLa using beta IV Tubulin antibody, and DAPI (blue)



Western blot analysis of beta IV Tubulin in mouse brain lysates using beta IV Tubulin antibody.



Western blot analysis of beta IV Tubulin in K562, rat Brain, C6, HeLa lysates using beta IV Tubulin antibody.



Immunohistochemistry analysis of paraffin-embedded Human brain using beta IV Tubulin antibody. High-pressure and temperature Sodium Citrate pH 6.0 was used for antigen retrieval.