

## BETA III TUBULIN RABBIT MAB

**Cat.#:** N261921

**Product Name:** Anti-beta III Tubulin Rabbit Monoclonal Antibody

**Synonyms:** TUBB3; TUBB4; Tubulin beta-3 chain; Tubulin beta-4 chain; Tubulin beta-III

**UNIPROT ID:** Q13509

**Background:** TUBB3 Tubulin is the major constituent of microtubules. It binds two moles of GTP, one at an exchangeable site on the beta chain and one at a non-exchangeable site on the alpha-chain. TUBB3 plays a critical role in proper axon guidance and maintenance.

**Immunogen:** A synthetic peptide of human beta III Tubulin

**Applications:** WB,IHC-F,IHC-P,ICC/IF,IP

**Recommended Dilutions:** WB: 1/500-1/1000 IHC: 1/50-1/100 IF: 1/50-1/200 IP: 1/20

**Host Species:** Rabbit

**Clonality:** Rabbit Monoclonal

**Clone ID:** R02-4G7

**MW:** Calculated MW: 50 kDa; Observed MW: 50 kDa

**Isotype:** IgG

**Purification:** Affinity Purified

**Species Reactivity:** Human,Mouse,Rat

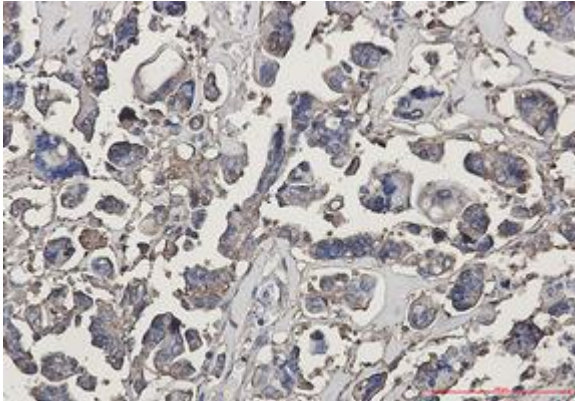
**Conjugation:** Unconjugated

**Modification:** Unmodified

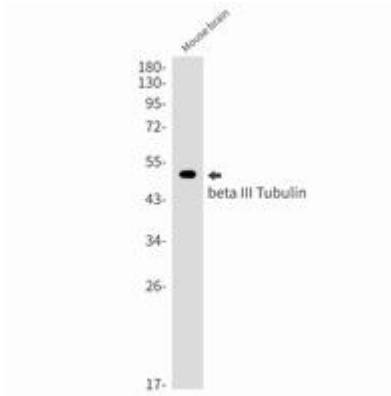
**Constituents:** PBS (without Mg<sup>2+</sup> and Ca<sup>2+</sup>), pH 7.3 containing 50% glycerol, 0.5% BSA and 0.02% sodium azide

**Research Areas:** Signal Transduction

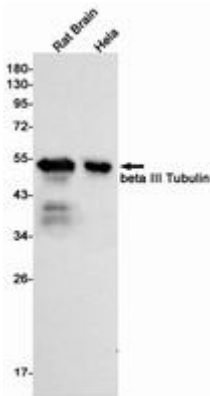
**Storage & Shipping:** Store at -20°C. Avoid repeated freezing and thawing



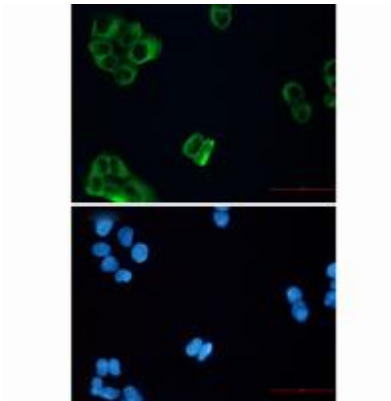
Immunohistochemistry analysis of paraffin-embedded Human Cholangiocarcinoma using beta III Tubulin antibody. High-pressure and temperature Sodium Citrate pH 6.0 was used for antigen retrieval.



Western blot analysis of beta III Tubulin in mouse brain lysates using beta III Tubulin antibody.



Western blot analysis of beta III Tubulin in rat Brain, HeLa lysates using beta III Tubulin antibody.



Immunocytochemistry analysis of beta III Tubulin (green) in HeLa using beta III Tubulin antibody, and DAPI(blue).