

BETA CATENIN (7E2) MOUSE MAB

Cat.#: N261267

Product Name: Anti-beta Catenin (7E2) Mouse Monoclonal Antibody

Synonyms: CTNNB1; CTNNB; OK/SW-cl.35; Catenin beta-1; Beta-catenin

UNIPROT ID: P35222

Background: Beta-catenin is an adherens junction protein. Adherens junctions (AJs; also called the zonula adherens) are critical for the establishment and maintenance of epithelial layers, such as those lining organ surfaces. AJs mediate adhesion between cells, communicate a signal that neighboring cells are present, and anchor the actin cytoskeleton. In serving these roles, AJs regulate normal cell growth and behavior.

Immunogen: Recombinant Protein of Catenin- β

Applications: WB,IHC-P

Recommended Dilutions: WB: 1/500-1/1000 IHC: 1/50-1/100

Host Species: Mouse

Clonality: Mouse Monoclonal

Clone ID: 7E2-2D3-6G4

MW: Calculated MW: 85 kDa; Observed MW: 92 kDa

Isotype: IgG1

Purification: Affinity Purified

Species Reactivity: Human,Mouse,Rat

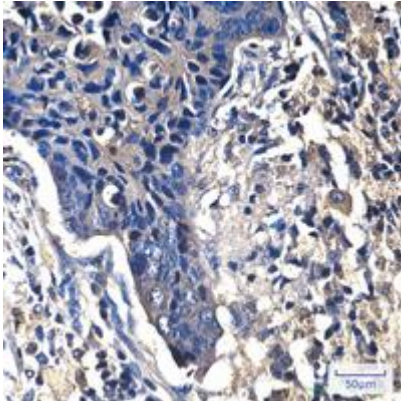
Conjugation: Unconjugated

Modification: Unmodified

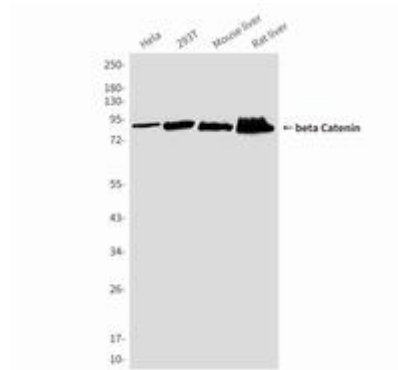
Constituents: PBS (without Mg²⁺ and Ca²⁺), pH 7.3 containing 50% glycerol, 0.5% BSA and 0.02% sodium azide

Research Areas: Signal Transduction

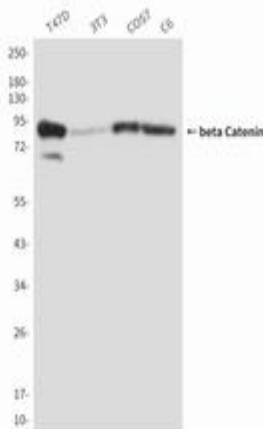
Storage & Shipping: Store at -20°C. Avoid repeated freezing and thawing



Immunohistochemistry analysis of paraffin-embedded Human lung cancer tissue using beta Catenin (7E2) antibody. High-pressure and temperature Sodium Citrate pH 6.0 was used for antigen retrieval.



Western blot analysis of beta Catenin (7E2) in Hela, 293T, mouse Liver, rat Liver lysates using beta Catenin antibody.



Western blot analysis of beta Catenin (7E2) in T47D, 3T3, COS7 and C6 lysates using beta Catenin antibody.