

## BETA 3 GAL T1 RABBIT PAB

**Cat.#:** N225156

**Product Name:** Anti-beta 3 Gal T1 Rabbit pAb

**Synonyms:** B3GALT1; Beta-1; 3-galactosyltransferase 1; Beta-1; 3-GalTase 1; Beta3Gal-T1; Beta3GalT1; UDP-galactose:beta-N-acetyl-glucosamine-beta-1; 3-galactosyltransferase 1

**UNIPROT ID:** Q9Y5Z6

**Background:** Beta-1,3-galactosyltransferase that transfers galactose from UDP-alpha-D-galactose to substrates with a terminal beta-N-acetylglucosamine (beta-GlcNAc) residue.

**Immunogen:** The antiserum was produced against synthesized peptide derived from human B3GALT1. AA range:61-110

**Applications:** WB,ELISA

**Recommended Dilutions:** WB: 1/500-1/1000 ELISA: 1/10000

**Host Species:** Rabbit

**Clonality:** Rabbit Polyclonal

**Clone ID:** -

**MW:** Calculated MW: 38 kDa; Observed MW: 38 kDa

**Isotype:** IgG

**Purification:** Affinity Purified

**Species Reactivity:** Human,Mouse

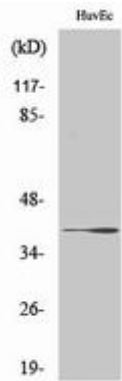
**Conjugation:** Unconjugated

**Modification:** Unmodified

**Constituents:** PBS (without Mg<sup>2+</sup> and Ca<sup>2+</sup>), pH 7.3 containing 50% glycerol, 0.5% BSA and 0.02% sodium azide

**Research Areas:** -

**Storage & Shipping:** Store at -20°C. Avoid repeated freezing and thawing



Western blot analysis of beta 3 Gal T1 in various lysates using beta 3 Gal T1 antibody.