

BETA 2 MICROGLOBULIN RABBIT MAB

Cat.#: N261919

Product Name: Anti-beta 2 Microglobulin Rabbit Monoclonal Antibody

Synonyms: B2MG; Beta 2 microglobin; Beta 2 microglobulin; Beta-2-microglobulin form pl 5.3; CDABP0092; Hdcma22p

UNIPROT ID: P61769

Background: Major histocompatibility complex (MHC) class 1 molecules bind to antigens for presentation on the surface of cells. The proteasome is responsible for producing these antigens from the components of foreign pathogens. MHC class 1 molecules consist of an a heavy chain that contains three subdomains ($\alpha 1$, $\alpha 2$, $\alpha 3$), and a non-covalent associating light chain, known as β -2-Microglobulin.

Immunogen: Recombinant protein of human beta 2 Microglobulin

Applications: WB,IHC-P,IP

Recommended Dilutions: WB: 1/500-1/1000 IHC: 1/50-1/100 IP: 1/20

Host Species: Rabbit

Clonality: Rabbit Monoclonal

Clone ID: R01-4H5

MW: Calculated MW: 14 kDa; Observed MW: 14 kDa

Isotype: IgG

Purification: Affinity Purified

Species Reactivity: Human,Mouse

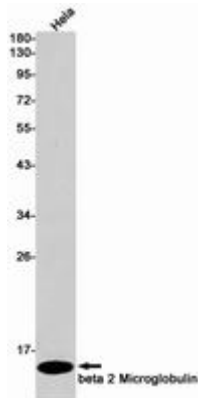
Conjugation: Unconjugated

Modification: Unmodified

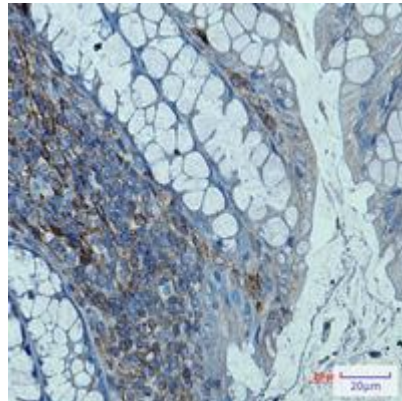
Constituents: PBS (without Mg^{2+} and Ca^{2+}), pH 7.3 containing 50% glycerol, 0.5% BSA and 0.02% sodium azide

Research Areas: Cardiovascular

Storage & Shipping: Store at $-20^{\circ}C$. Avoid repeated freezing and thawing



Western blot analysis of beta 2 Microglobulin in Hela lysates using beta 2 Microglobulin antibody.



Immunohistochemistry analysis of paraffin-embedded mouse colon using beta 2 Microglobulin antibody. High-pressure and temperature Sodium Citrate pH 6.0 was used for antigen retrieval.