

## BECLIN 1 RABBIT MAB

**Cat.#:** N261689

**Product Name:** Anti-Beclin 1 Rabbit Monoclonal Antibody

**Synonyms:** BECN1

**UNIPROT ID:** Q14457

**Background:** Plays a central role in autophagy. Required for the abscission step in cytokinesis. May play a role in antiviral host defense. Protects against infection by a neurovirulent strain of Sindbis virus.

**Immunogen:** Recombinant protein of human Beclin 1

**Applications:** WB,IP

**Recommended Dilutions:** WB: 1/500-1/1000 IP: 1/20

**Host Species:** Rabbit

**Clonality:** Rabbit Monoclonal

**Clone ID:** R02-8D5

**MW:** Calculated MW: 52 kDa; Observed MW: 60 kDa

**Isotype:** IgG

**Purification:** Affinity Purified

**Species Reactivity:** Human,Mouse,Rat

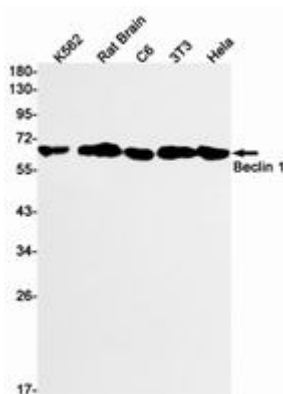
**Conjugation:** Unconjugated

**Modification:** Unmodified

**Constituents:** PBS (without Mg<sup>2+</sup> and Ca<sup>2+</sup>), pH 7.3 containing 50% glycerol, 0.5% BSA and 0.02% sodium azide

**Research Areas:** Autophagy, Autophagosome

**Storage & Shipping:** Store at -20°C. Avoid repeated freezing and thawing



Western blot analysis of Beclin 1 in K562, rat Brain, C6, 3T3, HeLa lysates using Beclin 1 antibody.



# Product Description

Pioneering GTPase and Oncogene Product Development since 2010

---