

## BCL2 RABBIT PAB

**Cat.#:** N225791

**Product Name:** Anti-Bcl2 Rabbit pAb

**Synonyms:** BCL2; Apoptosis regulator Bcl-2

**UNIPROT ID:** P10415

**Background:** This gene encodes an integral outer mitochondrial membrane protein that blocks the apoptotic death of some cells such as lymphocytes. Constitutive expression of BCL2, such as in the case of translocation of BCL2 to Ig heavy chain locus, is thought to be the cause of follicular lymphoma.

**Immunogen:** A synthesized peptide derived from human Bcl-2

**Applications:** WB,IHC-P,ICC/IF,FC

**Recommended Dilutions:** WB: 1/500-1/1000 IHC: 1/50-1/100 IF: 1/50-1/200 FC: 1/50-1/100

**Host Species:** Rabbit

**Clonality:** Rabbit Polyclonal

**Clone ID:** -

**MW:** Calculated MW: 26 kDa; Observed MW: 26 kDa

**Isotype:** IgG

**Purification:** Affinity Chromatography

**Species Reactivity:** Human,Mouse

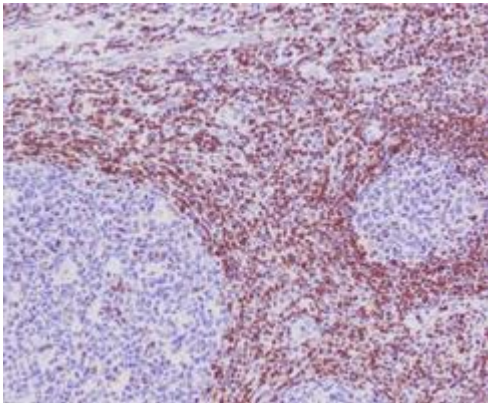
**Conjugation:** Unconjugated

**Modification:** Unmodified

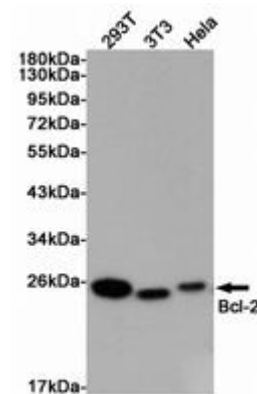
**Constituents:** PBS (without Mg<sup>2+</sup> and Ca<sup>2+</sup>), pH 7.3 containing 50% glycerol, 0.5% BSA and 0.02% sodium azide

**Research Areas:** Autophagy Autophagosome

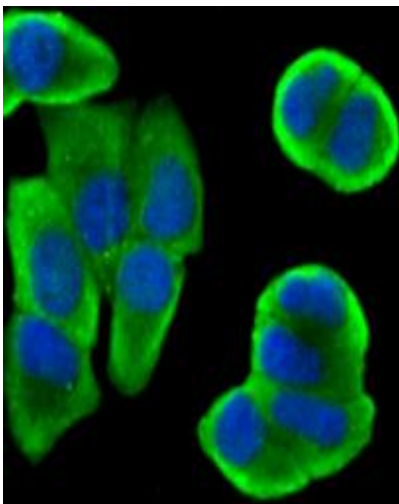
**Storage & Shipping:** Store at -20°C. Avoid repeated freezing and thawing



Immunohistochemistry analysis of paraffin-embedded Human tonsil using Bcl2 antibody. High-pressure and temperature Sodium Citrate pH 6.0 was used for antigen retrieval.



Western blot analysis of Bcl2 in 293T, 3T3 and HeLa lysates using Bcl2 antibody.



Immunocytochemistry analysis of Bcl2 (green) in MCF-7 using Bcl2 antibody, and DAPI (blue)