

## BCL-XL RABBIT MAB

**Cat.#:** N261917

**Product Name:** Anti-Bcl-XL Rabbit Monoclonal Antibody

**Synonyms:** BCL2L1; BCL2L; BCLX; Bcl-2-like protein 1; Bcl2-L-1; Apoptosis regulator Bcl-X

**UNIPROT ID:** Q07817

**Background:** The protein encoded by this gene belongs to the BCL-2 protein family. BCL-2 family members form hetero- or homodimers and act as anti- or pro-apoptotic regulators that are involved in a wide variety of cellular activities.

**Immunogen:** Recombinant protein of human Bcl-XL

**Applications:** WB,IHC-F,IHC-P,ICC/IF,IP

**Recommended Dilutions:** WB: 1/500-1/1000 IHC: 1/50-1/100 IF: 1/50-1/200 IP: 1/20

**Host Species:** Rabbit

**Clonality:** Rabbit Monoclonal

**Clone ID:** R02-2D3

**MW:** Calculated MW: 26 kDa; Observed MW: 30 kDa

**Isotype:** IgG

**Purification:** Affinity Purified

**Species Reactivity:** Human,Mouse,Rat

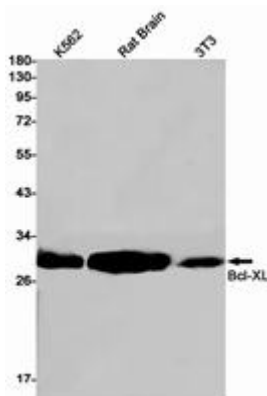
**Conjugation:** Unconjugated

**Modification:** Unmodified

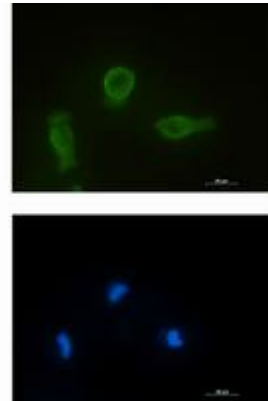
**Constituents:** PBS (without Mg<sup>2+</sup> and Ca<sup>2+</sup>), pH 7.3 containing 50% glycerol, 0.5% BSA and 0.02% sodium azide

**Research Areas:** Cell Biology

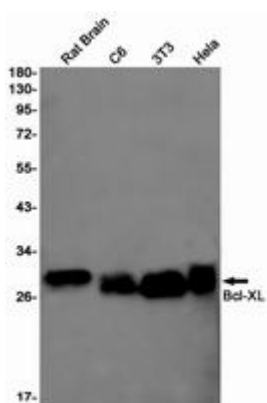
**Storage & Shipping:** Store at -20°C. Avoid repeated freezing and thawing



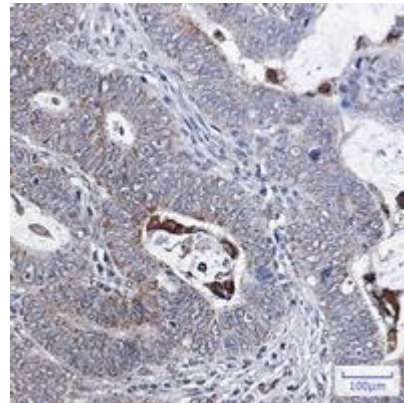
Western blot analysis of Bcl-XL in K562, rat Brain, 3T3 lysates using Bcl-XL antibody



Immunocytochemistry analysis of Bcl-XL (green) in HT-1080 using Bcl-XL antibody, and DAPI (blue).



Western blot analysis of Bcl-XL in rat Brain, C6, 3T3, HeLa lysates using Bcl-XL antibody.



Immunohistochemistry analysis of paraffin-embedded Human colon cancer using Bcl-XL antibody. High-pressure and temperature Sodium Citrate pH 6.0 was used for antigen retrieval.