

BCAT1 RABBIT PAB

Cat.#: S217202

Product Name: Anti-BCAT1 Rabbit Polyclonal Antibody

Synonyms: BCT1; PP18; BCATC; ECA39; MECA39; PNAS121

UNIPROT ID: P54687 (Gene Accession - BC033864)

Background: This gene encodes the cytosolic form of the enzyme branched-chain amino acid transaminase. This enzyme catalyzes the reversible transamination of branched-chain alpha-keto acids to branched-chain L-amino acids essential for cell growth. Two different clinical disorders have been attributed to a defect of branched-chain amino acid transamination: hypervalinemia and hyperleucine-isoleucinemia. As there is also a gene encoding a mitochondrial form of this enzyme, mutations in either gene may contribute to these disorders. Alternatively spliced transcript variants have been described.

Immunogen: Fusion protein of human BCAT1

Applications: ELISA, WB, IHC

Recommended Dilutions: IHC: 50-200;WB: 500-2000;ELISA: 5000-10000

Host Species: Rabbit

Clonality: Rabbit Polyclonal

Isotype: Immunogen-specific rabbit IgG

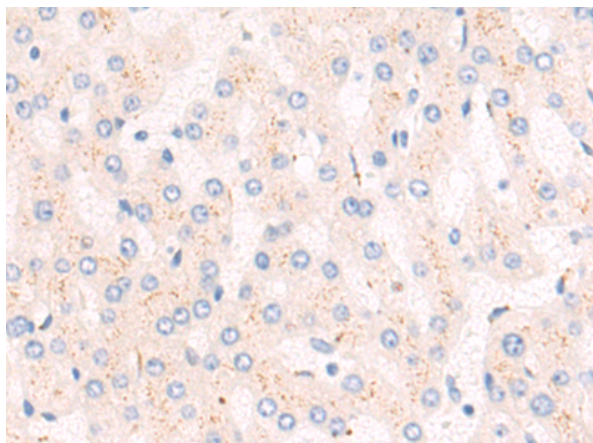
Purification: Antigen affinity purification

Species Reactivity: Human, Mouse

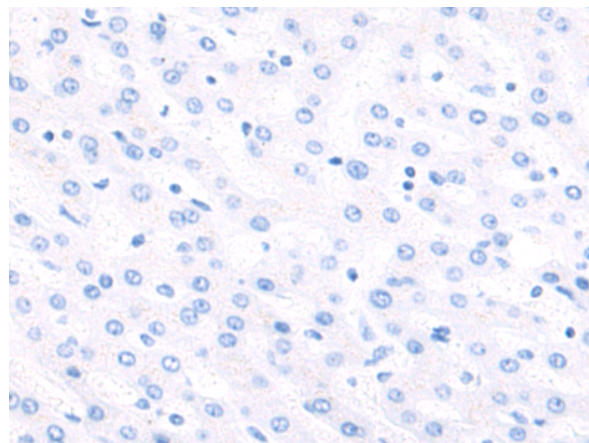
Constituents: PBS (without Mg²⁺ and Ca²⁺), pH 7.4, 150 mM NaCl, 0.05% Sodium Azide and 40% glycerol

Research Areas: Metabolism

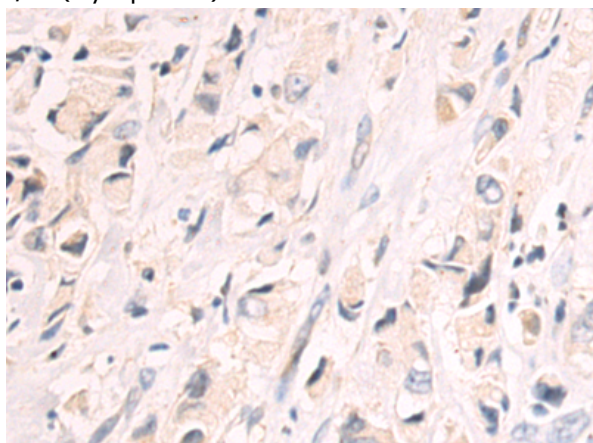
Storage & Shipping: Store at -20°C. Avoid repeated freezing and thawing



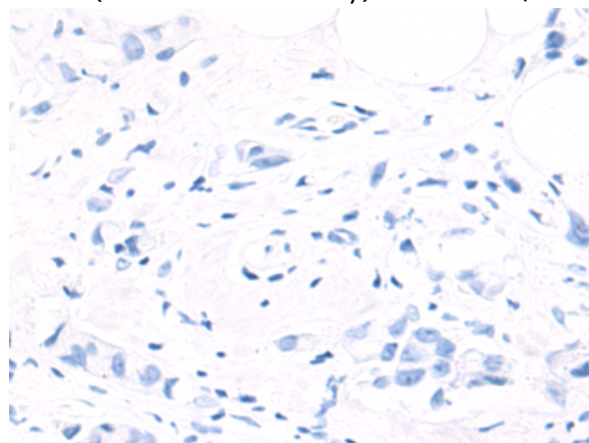
Immunohistochemistry analysis of paraffin embedded Human liver cancer tissue using 217202(BCAT1 Antibody) at a dilution of 1/55(Cytoplasm).



In comparison with the IHC on the left, the same paraffin-embedded Human liver cancer tissue is first treated with the fusion protein and then with 217202(Anti-BCAT1 Antibody) at dilution 1/55.



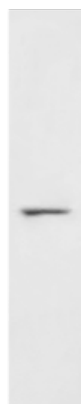
The image on the left is immunohistochemistry of paraffin-embedded Human breast cancer tissue using 217202(Anti-BCAT1 Antibody) at a dilution of 1/55.



In comparison with the IHC on the left, the same paraffin-embedded Human breast cancer tissue is first treated with fusion protein and then with D221976(Anti-BCAT1 Antibody) at dilution 1/55.

kDa

130 —
95 —
72 —
55 —
36 —
28 —
17 —



Gel: 8%SDS-PAGE, Lysate: 40 µg;

Lane: Ramos cell lysate;

Primary antibody: 217202(BCAT1 Antibody) at dilution 1/1000;

Secondary antibody: HRP-conjugated Goat anti rabbit IgG at 1/5000 dilution;

Exposure time: 1 minute



Product Description

Pioneering GTPase and Oncogene Product Development since 2010
