

BCAS2 RABBIT PAB

Cat.#: S217201

Product Name: Anti-BCAS2 Rabbit Polyclonal Antibody

Synonyms: DAM1; SPF27; Snt309

UNIPROT ID: O75934 (Gene Accession - BC005285)

Background: BCAS2 (breast carcinoma amplified sequence 2), also designated DAM1 (DNA amplified in mammary carcinoma 1 protein) or spliceosome-associated SPF 27, is a ubiquitously expressed nuclear protein that was originally identified as being overexpressed in various breast cancer cell lines. BCAS2 is now known to be a component of the spliceosome, participating in the removal of introns from mRNA precursors. BCAS2 specifically interacts (in a ligand-independent manner) with TR β (thyroid hormone receptor beta), ER α (estrogen receptor alpha), ER β , PR (progesterone receptor), and PPAR γ (Peroxisome proliferator-activated receptor gamma). BCAS2 functions as an ER coactivator and is capable of enhancing ER-mediated transcription. This suggests that BCAS2 is involved in the development of breast cancer.

Immunogen: Fusion protein of human BCAS2

Applications: ELISA, WB, IHC

Recommended Dilutions: IHC: 50-200;WB: 200-1000;ELISA: 1000-5000

Host Species: Rabbit

Clonality: Rabbit Polyclonal

Isotype: Immunogen-specific rabbit IgG

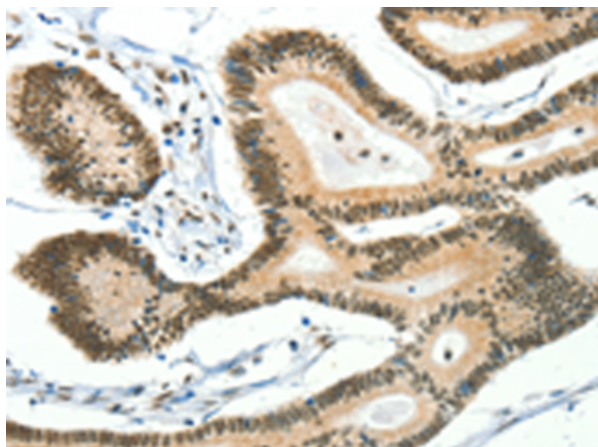
Purification: Antigen affinity purification

Species Reactivity: Human, Mouse

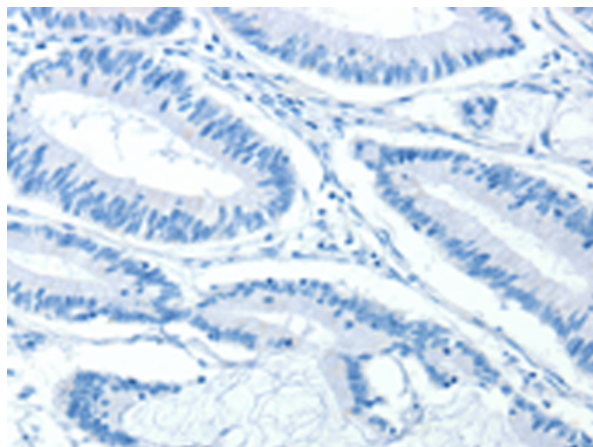
Constituents: PBS (without Mg²⁺ and Ca²⁺), pH 7.4, 150 mM NaCl, 0.05% Sodium Azide and 40% glycerol

Research Areas: Epigenetics and Nuclear Signaling

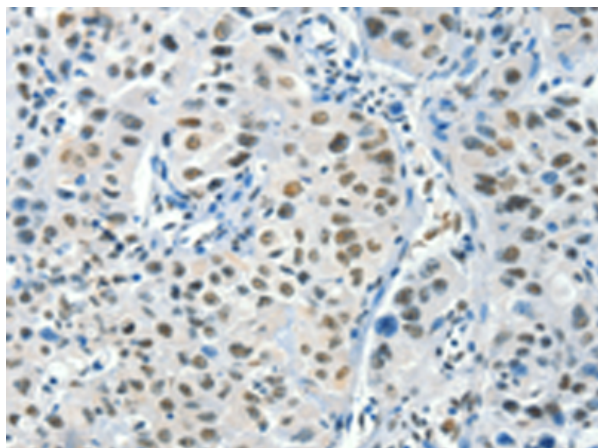
Storage & Shipping: Store at -20°C. Avoid repeated freezing and thawing



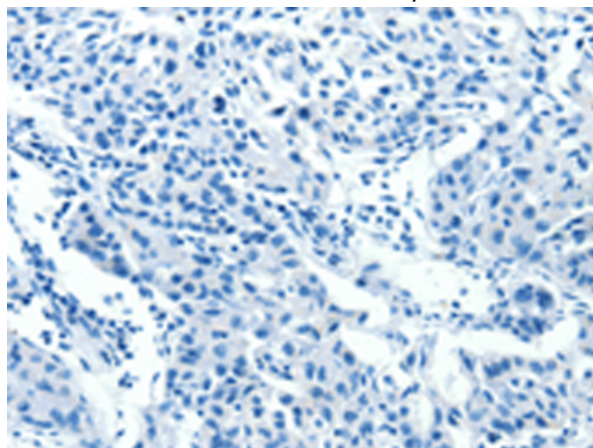
Immunohistochemistry analysis of paraffin embedded Human colon cancer tissue using 217201(BCAS2 Antibody) at a dilution of 1/50(Nucleus).



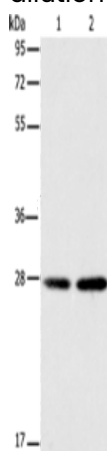
In comparison with the IHC on the left, the same paraffin-embedded Human colon cancer tissue is first treated with the fusion protein and then with 217201(Anti-BCAS2 Antibody) at dilution 1/50.



The image on the left is immunohistochemistry of paraffin-embedded Human lung cancer tissue using 217201(Anti-BCAS2 Antibody) at a dilution of 1/50.



In comparison with the IHC on the left, the same paraffin-embedded Human lung cancer tissue is first treated with fusion protein and then with D221974(Anti-BCAS2 Antibody) at dilution 1/50.



Gel: 12%SDS-PAGE, Lysate: 40 µg;
Lane 1-2: A172 cells, 231 cells;
Primary antibody: 217201(BCAS2 Antibody) at dilution 1/250;
Secondary antibody: Goat anti rabbit IgG at 1/8000 dilution;
Exposure time: 20 seconds



Product Description

Pioneering GTPase and Oncogene Product Development since 2010
