

## BCAN RABBIT PAB

**Cat.#:** S218370

**Product Name:** Anti-BCAN Rabbit Polyclonal Antibody

**Synonyms:** BEHAB; CSPG7

**UNIPROT ID:** Q96GW7 (Gene Accession - BC022938 )

**Background:** This gene encodes a member of the lectican family of chondroitin sulfate proteoglycans that is specifically expressed in the central nervous system. This protein is developmentally regulated and may function in the formation of the brain extracellular matrix. This protein is highly expressed in gliomas and may promote the growth and cell motility of brain tumor cells. Alternate splicing results in multiple transcript variants. [provided by RefSeq, Sep 2011]

**Immunogen:** Fusion protein of human BCAN

**Applications:** ELISA, IHC

**Recommended Dilutions:** IHC: 50–200; ELISA: 5000–10000

**Host Species:** Rabbit

**Clonality:** Rabbit Polyclonal

**Isotype:** Immunogen-specific rabbit IgG

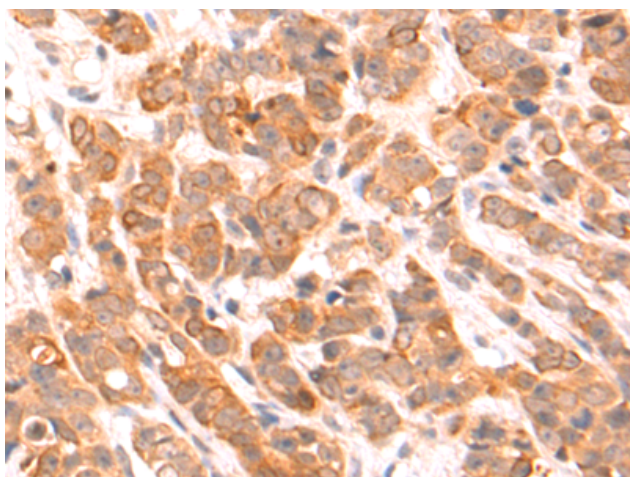
**Purification:** Antigen affinity purification

**Species Reactivity:** Human, Mouse, Rat

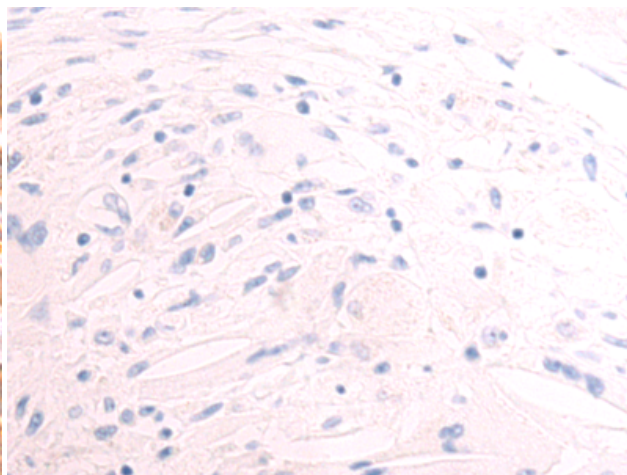
**Constituents:** PBS (without Mg<sup>2+</sup> and Ca<sup>2+</sup>), pH 7.4, 150 mM NaCl, 0.05% Sodium Azide and 40% glycerol

**Research Areas:** Signal Transduction, Neuroscience

**Storage & Shipping:** Store at -20°C. Avoid repeated freezing and thawing



Immunohistochemistry analysis of paraffin embedded Human breast cancer tissue using 218370(BCAN Antibody) at a dilution of 1/60(Secreted).



In comparison with the IHC on the left, the same paraffin-embedded Human breast cancer tissue is first treated with the fusion protein and then with 218370(Anti-BCAN Antibody) at dilution 1/60.