

## BBOX1 RABBIT PAB

**Cat.#:** S218352

**Product Name:** Anti-BBOX1 Rabbit Polyclonal Antibody

**Synonyms:** BBH; BBOX; G-BBH; gamma-BBH

**UNIPROT ID:** O75936 (Gene Accession - BC011034 )

**Background:** This gene encodes gamma butyrobetaine hydroxylase which catalyzes the formation of L-carnitine from gamma-butyrobetaine, the last step in the L-carnitine biosynthetic pathway. Carnitine is essential for the transport of activated fatty acids across the mitochondrial membrane during mitochondrial beta-oxidation.

**Immunogen:** Fusion protein of human BBOX1

**Applications:** ELISA, WB, IHC

**Recommended Dilutions:** IHC: 30-150;WB: 500-2000;ELISA: 5000-10000

**Host Species:** Rabbit

**Clonality:** Rabbit Polyclonal

**Isotype:** Immunogen-specific rabbit IgG

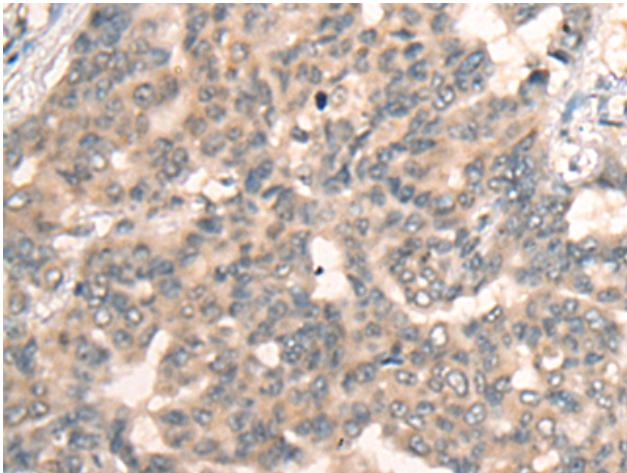
**Purification:** Antigen affinity purification

**Species Reactivity:** Human, Mouse, Rat

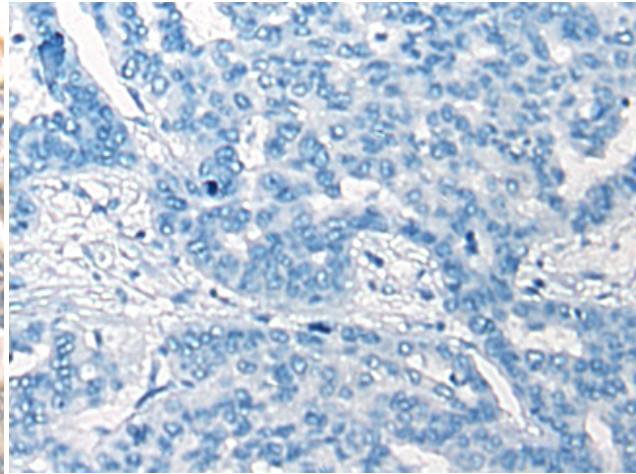
**Constituents:** PBS (without Mg<sup>2+</sup> and Ca<sup>2+</sup>), pH 7.4, 150 mM NaCl, 0.05% Sodium Azide and 40% glycerol

**Research Areas:** Metabolism

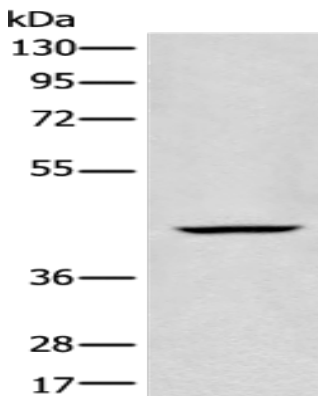
**Storage & Shipping:** Store at -20°C. Avoid repeated freezing and thawing



Immunohistochemistry analysis of paraffin embedded Human liver cancer tissue using 218352(BBOX1 Antibody) at a dilution of 1/45(Cytoplasm).



In comparison with the IHC on the left, the same paraffin-embedded Human liver cancer tissue is first treated with the fusion protein and then with 218352(Anti-BBOX1 Antibody) at dilution 1/45.



Gel: 8%SDS-PAGE, Lysate: 40  $\mu$ g;  
Lane: Human kidney tissue lysate;  
Primary antibody: 218352(BBOX1 Antibody) at dilution 1/650;  
Secondary antibody: Goat anti rabbit IgG at 1/8000 dilution;  
Exposure time: 10 seconds