

BAP31 RABBIT MAB

Cat.#: N261912

Product Name: Anti-BAP31 Rabbit Monoclonal Antibody

Synonyms: BCAP31; BAP31; DXS1357E; B-cell receptor-associated protein 31; BCR-associated protein 31; Bap31; 6C6-AG tumor-associated antigen; Protein CDM; p28

UNIPROT ID: P51572

Background: May play a role in anterograde transport of membrane proteins from the endoplasmic reticulum to the Golgi. May be involved in CASP8-mediated apoptosis.

Immunogen: A synthetic peptide of human BAP31

Applications: WB,IHC-F,IHC-P,ICC/IF

Recommended Dilutions: WB: 1/500-1/1000 IHC: 1/50-1/100 IF: 1/50-1/200

Host Species: Rabbit

Clonality: Rabbit Monoclonal

Clone ID: R03-9F1

MW: Calculated MW: 28 kDa; Observed MW: 28 kDa

Isotype: IgG

Purification: Affinity Purified

Species Reactivity: Human,Mouse

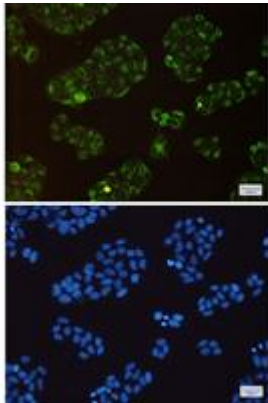
Conjugation: Unconjugated

Modification: Unmodified

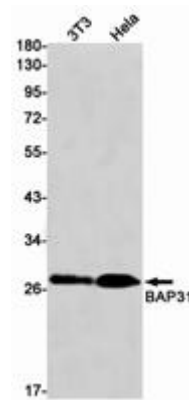
Constituents: PBS (without Mg²⁺ and Ca²⁺), pH 7.3 containing 50% glycerol, 0.5% BSA and 0.02% sodium azide

Research Areas: Cell Biology

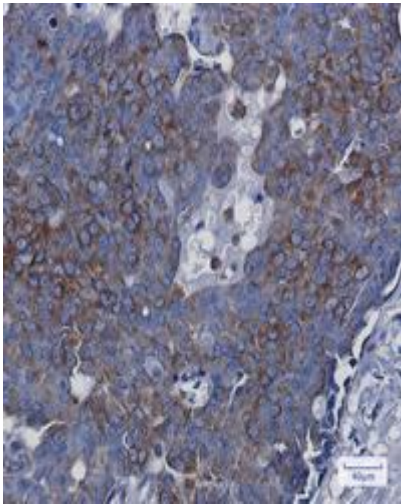
Storage & Shipping: Store at -20°C. Avoid repeated freezing and thawing



Immunocytochemistry analysis of BAP31 (green) in HeLa using BAP31 antibody, and DAPI (blue)



Western blot analysis of BAP31 in K562, HeLa lysates using BAP31 antibody.



Immunohistochemistry analysis of paraffin-embedded Human breast cancer using BAP31 antibody. High-pressure and temperature Sodium Citrate pH 6.0 was used for antigen retrieval.