

BAGE2 RABBIT PAB

Cat.#: S221606

Product Name: Anti-BAGE2 Rabbit Polyclonal Antibody

Synonyms: CT2.2

UNIPROT ID: Q86Y30

Background: Members of the BAGE gene family encode antigens that are recognized by cytotoxic T lymphocytes and are also known as CT (cancer/testis) antigens. Generated by juxtacentromeric shuffling of the MLL3 gene, the ancestral BAGE gene was expanded by acrocentric exchanges and/or juxtacentromeric movements. Generally, BAGE proteins are silent in all normal tissues with the exception of testis. BAGE2 (B melanoma antigen 2), also known as Cancer/testis antigen 2.2, is 109 amino acid secreted proteins that is expressed in 22% of melanomas, lung and bladder carcinomas, and is also expressed in normal testis tissue. Like the genes encoding MAGE proteins, BAGE genes are most likely silenced by DNA methylation and/or chromatin compaction in normal tissues other than testis.

Immunogen: Synthetic peptide of human BAGE2

Applications: ELISA, IHC

Recommended Dilutions: IHC: 25-100; ELISA: 5000-10000

Host Species: Rabbit

Clonality: Rabbit Polyclonal

Isotype: Immunogen-specific rabbit IgG

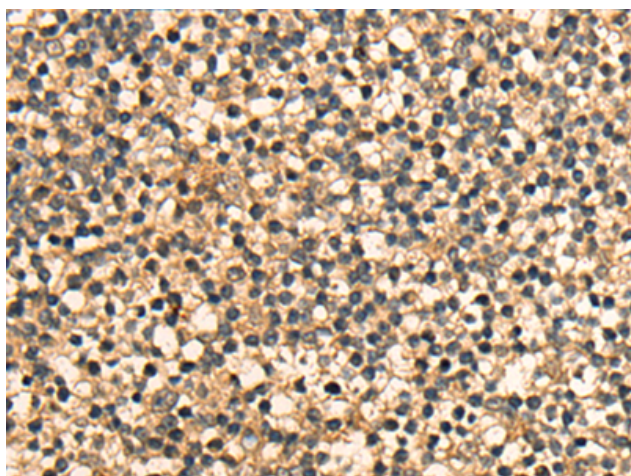
Purification: Antigen affinity purification

Species Reactivity: Human

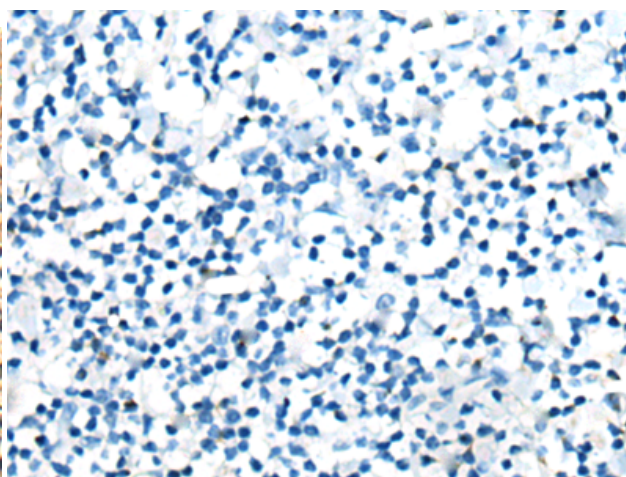
Constituents: PBS (without Mg²⁺ and Ca²⁺), pH 7.4, 150 mM NaCl, 0.05% Sodium Azide and 40% glycerol

Research Areas: Cancer

Storage & Shipping: Store at -20°C. Avoid repeated freezing and thawing



Immunohistochemistry analysis of paraffin embedded Human tonsil tissue using 221606(BAGE2 Antibody) at a dilution of 1/25 (Secreted).



In comparison with the IHC on the left, the same paraffin-embedded Human tonsil tissue is first treated with the synthetic peptide and then with 221606 (Anti-BAGE2 Antibody) at dilution 1/25.



Product Description

Pioneering GTPase and Oncogene Product Development since 2010
