

BAG1 RABBIT PAB

Cat.#: S216291

Product Name: Anti-BAG1 Rabbit Polyclonal Antibody

Synonyms: HAP; BAG-1; RAP46

UNIPROT ID: Q99933 (Gene Accession - BC001936)

Background: The oncogene BCL2 is a membrane protein that blocks a step in a pathway leading to apoptosis or programmed cell death. The protein encoded by this gene binds to BCL2 and is referred to as BCL2-associated athanogene. It enhances the anti-apoptotic effects of BCL2 and represents a link between growth factor receptors and anti-apoptotic mechanisms. Multiple protein isoforms are encoded by this mRNA through the use of a non-AUG (CUG) initiation codon, and three alternative downstream AUG initiation codons. A related pseudogene has been defined on chromosome X.

Immunogen: Fusion protein of human BAG1

Applications: ELISA, WB, IHC

Recommended Dilutions: IHC: 50-200;WB: 500-2000;ELISA: 2000-5000

Host Species: Rabbit

Clonality: Rabbit Polyclonal

Isotype: Immunogen-specific rabbit IgG

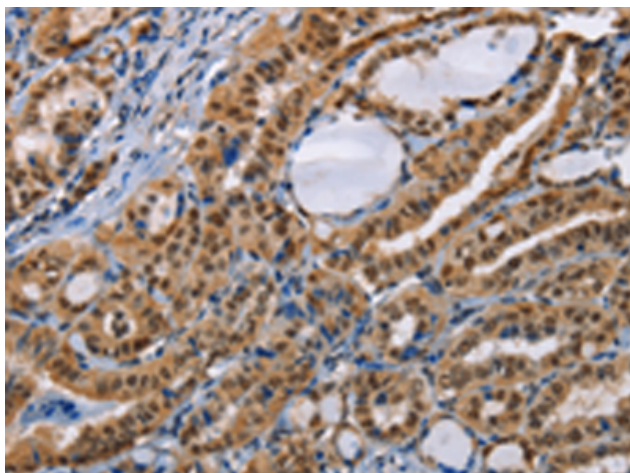
Purification: Antigen affinity purification

Species Reactivity: Human

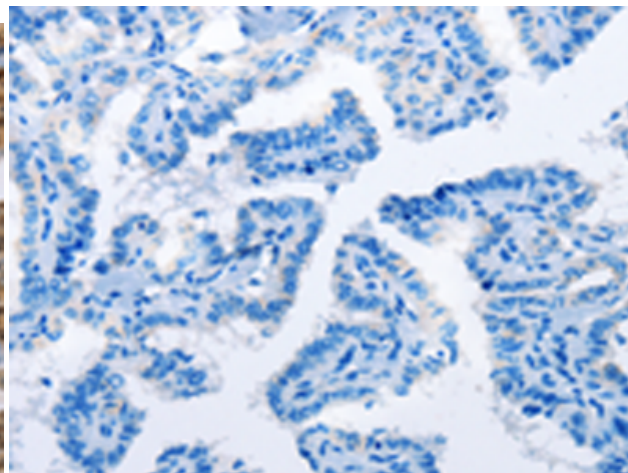
Constituents: PBS (without Mg²⁺ and Ca²⁺), pH 7.4, 150 mM NaCl, 0.05% Sodium Azide and 40% glycerol

Research Areas: Cancer, Cardiovascular

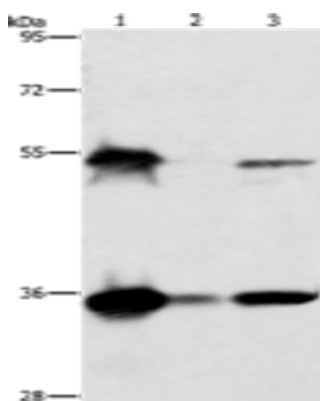
Storage & Shipping: Store at -20°C. Avoid repeated freezing and thawing



Immunohistochemistry analysis of paraffin embedded Human thyroid cancer tissue using 216291(BAG1 Antibody) at a dilution of 1/40(Nucleus).



In comparison with the IHC on the left, the same paraffin-embedded Human thyroid cancer tissue is first treated with the fusion protein and then with 216291(Anti-BAG1 Antibody) at dilution 1/40.



Gel: 8%SDS-PAGE, Lysate: 50 µg;
Lane 1-3: HeLa cells, K562 cells, Raji cells;
Primary antibody: 216291(BAG1 Antibody) at dilution 1/750;
Secondary antibody: Goat anti rabbit IgG at 1/8000 dilution;
Exposure time: 2 seconds