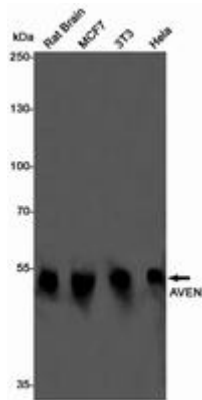
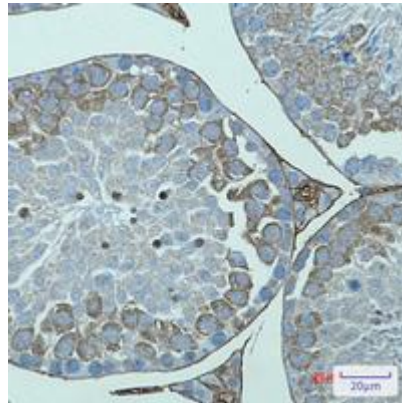


AVEN RABBIT MAB**Cat.#:** N261899**Product Name:** Anti-AVEN Rabbit Monoclonal Antibody**Synonyms:** PDCD12**UNIPROT ID:** Q9NQS1**Background:** Protects against apoptosis mediated by Apaf-1.**Immunogen:** A synthetic peptide of human AVEN**Applications:** WB,IHC-P**Recommended Dilutions:** WB: 1/500-1/1000 IHC: 1/50-1/100**Host Species:** Rabbit**Clonality:** Rabbit Monoclonal**Clone ID:** R06-7A9**MW:** Calculated MW: 39 kDa; Observed MW: 50 kDa**Isotype:** IgG**Purification:** Affinity Purified**Species Reactivity:** Human,Mouse,Rat**Conjugation:** Unconjugated**Modification:** Unmodified**Constituents:** PBS (without Mg²⁺ and Ca²⁺), pH 7.3 containing 50% glycerol, 0.5% BSA and 0.02% sodium azide**Research Areas:** Cell Biology**Storage & Shipping:** Store at -20°C. Avoid repeated freezing and thawing



Western blot analysis of AVEN in rat Brain, MCF-7, 3T3, HeLa lysates using AVEN antibody.



Immunohistochemistry analysis of paraffin-embedded mouse testis using AVEN antibody. High-pressure and temperature Sodium Citrate pH 6.0 was used for antigen retrieval.