

AURKC RABBIT PAB

Cat.#: S220323

Product Name: Anti-AURKC Rabbit Polyclonal Antibody

Synonyms: AIE2; AIK3; ARK3; AurC; SPGF5; STK13; aurora-C

UNIPROT ID: Q9UQB9 (Gene Accession - NP_001015878)

Background: This gene encodes a member of the Aurora subfamily of serine/threonine protein kinases. The encoded protein is a chromosomal passenger protein that forms complexes with Aurora-B and inner centromere proteins and may play a role in organizing microtubules in relation to centrosome/spindle function during mitosis. This gene is overexpressed in several cancer cell lines, suggesting an involvement in oncogenic signal transduction. Alternative splicing results in multiple transcript variants.

Immunogen: Synthetic peptide of human AURKC

Applications: ELISA, WB, IHC

Recommended Dilutions: IHC: 15-50;WB: 200-1000;ELISA: 1000-2000

Host Species: Rabbit

Clonality: Rabbit Polyclonal

Isotype: Immunogen-specific rabbit IgG

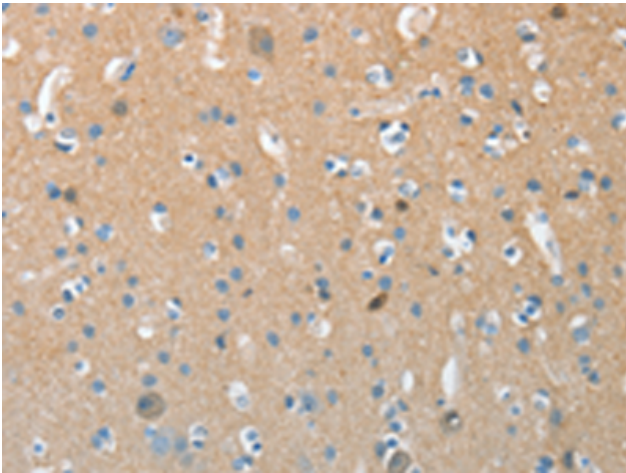
Purification: Antigen affinity purification

Species Reactivity: Human, Mouse

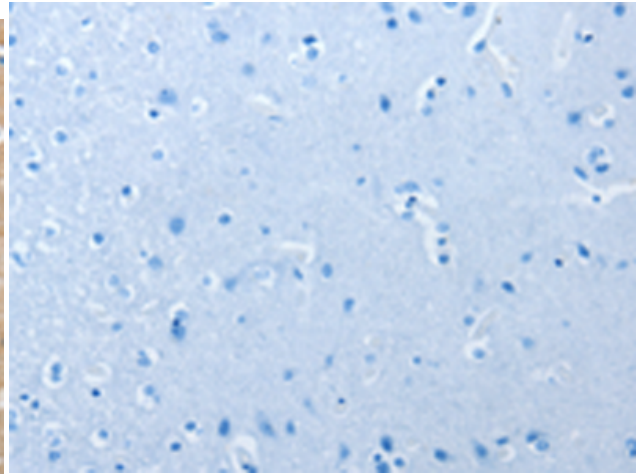
Constituents: PBS (without Mg²⁺ and Ca²⁺), pH 7.4, 150 mM NaCl, 0.05% Sodium Azide and 40% glycerol

Research Areas: Cancer

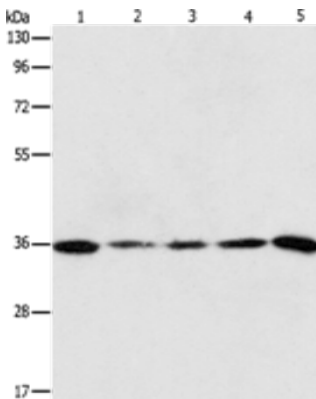
Storage & Shipping: Store at -20°C. Avoid repeated freezing and thawing



Immunohistochemistry analysis of paraffin embedded Human brain tissue using 220323(AURKC Antibody) at a dilution of 1/15(Cytoplasm).



In comparison with the IHC on the left, the same paraffin-embedded Human brain tissue is first treated with the synthetic peptide and then with 220323(Anti-AURKC Antibody) at dilution 1/15.



Gel: 10%SDS-PAGE, Lysate: 40 µg;
Lane 1-5: Mouse testis tissue, hela cells,
human liver cancer tissue, A375 cells, 293T
cells;
Primary antibody: 220323(AURKC Antibody) at
dilution 1/150;
Secondary antibody: Goat anti rabbit IgG at
1/8000 dilution;
Exposure time: 1 minute