

## ATPB RABBIT PAB

**Cat.#:** N225798

**Product Name:** Anti-ATPB Rabbit pAb

**Synonyms:** ATP5B; ATPMB; ATPSB; HEL-S-271

**UNIPROT ID:** P06576

**Background:** Rotation of the central stalk against the surrounding alpha(3)beta(3) subunits leads to hydrolysis of ATP in three separate catalytic sites on the beta subunits.

**Immunogen:** A synthesized peptide derived from human ATPB

**Applications:** WB,IHC-P,ICC/IF,IP

**Recommended Dilutions:** WB: 1/500-1/1000 IHC: 1/50-1/100 IF: 1/50-1/200 IP: 1/20

**Host Species:** Rabbit

**Clonality:** Rabbit Polyclonal

**Clone ID:** -

**MW:** Calculated MW: 57 kDa; Observed MW: 50 kDa

**Isotype:** IgG

**Purification:** Affinity Chromatography

**Species Reactivity:** Human,Mouse,Rat

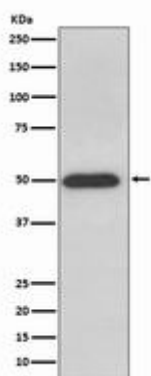
**Conjugation:** Unconjugated

**Modification:** Unmodified

**Constituents:** PBS (without Mg<sup>2+</sup> and Ca<sup>2+</sup>), pH 7.3 containing 50% glycerol, 0.5% BSA and 0.02% sodium azide

**Research Areas:** Tags & Cell Markers

**Storage & Shipping:** Store at -20°C. Avoid repeated freezing and thawing



Western blot analysis of ATPB in HeLa lysates using ATPB antibody.



# Product Description

Pioneering GTPase and Oncogene Product Development since 2010

---