

ATPB RABBIT MAB

Cat.#: N261897

Product Name: Anti-ATPB Rabbit Monoclonal Antibody

Synonyms: ATP5B; ATPMB; ATPSB; HEL-S-271

UNIPROT ID: P06576

Background: Rotation of the central stalk against the surrounding alpha(3)beta(3) subunits leads to hydrolysis of ATP in three separate catalytic sites on the beta subunits.

Immunogen: A synthetic peptide of human ATPB

Applications: WB,IHC-F,IHC-P,ICC/IF,IP

Recommended Dilutions: WB: 1/500-1/1000 IHC: 1/50-1/100 IF: 1/50-1/200 IP: 1/20

Host Species: Rabbit

Clonality: Rabbit Monoclonal

Clone ID: R01-4G1

MW: Calculated MW: 57 kDa; Observed MW: 52 kDa

Isotype: IgG

Purification: Affinity Purified

Species Reactivity: Human,Mouse,Rat,Monkey

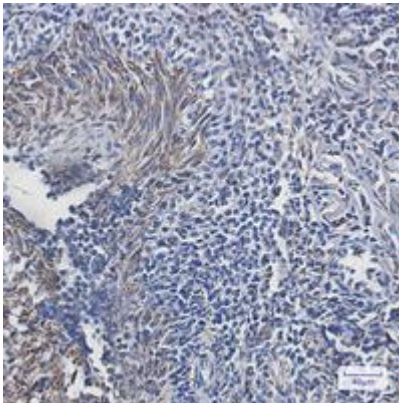
Conjugation: Unconjugated

Modification: Unmodified

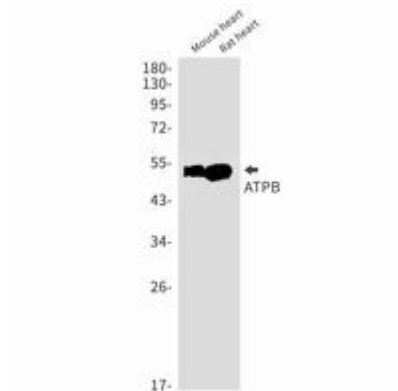
Constituents: PBS (without Mg²⁺ and Ca²⁺), pH 7.3 containing 50% glycerol, 0.5% BSA and 0.02% sodium azide

Research Areas: Tags & Cell Markers

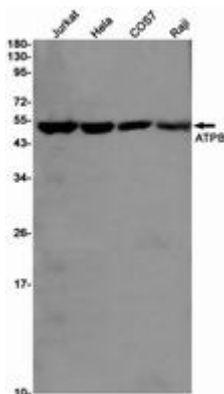
Storage & Shipping: Store at -20°C. Avoid repeated freezing and thawing



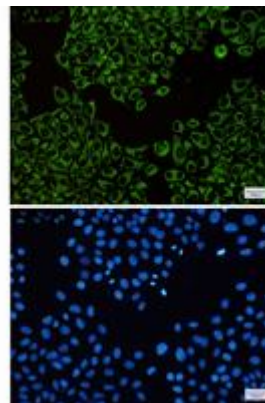
Immunohistochemistry analysis of paraffin-embedded Human tonsil using ATPB antibody. High-pressure and temperature Sodium Citrate pH 6.0 was used for antigen retrieval.



Western blot analysis of ATPB in mouse heart, rat heart lysates using ATPB antibody.



Western blot analysis of ATPB in Jurkat, Hela, COS7, Raji lysates using ATPB antibody.



Immunocytochemistry analysis of ATPB (green) in Hela using ATPB antibody, and DAPI (blue).