

## ATP6V1E1 RABBIT PAB

**Cat.#:** N225999

**Product Name:** Anti-ATP6V1E1 Rabbit pAb

**Synonyms:** V-ATPase subunit E 1; p31

**UNIPROT ID:** P36543

**Background:** Subunit of the V1 complex of vacuolar(H<sup>+</sup>)-ATPase (V-ATPase), a multisubunit enzyme composed of a peripheral complex (V1) that hydrolyzes ATP and a membrane integral complex (V0) that translocates protons.

**Immunogen:** Recombinant protein of human ATP6V1E1

**Applications:** WB,IHC-F,IHC-P,ICC/IF,FC,IP

**Recommended Dilutions:** WB: 1/500-1/1000 IHC: 1/50-1/100 IF: 1/50-1/200 IP: 1/20 FC: 1/50-1/100

**Host Species:** Rabbit

**Clonality:** Rabbit Polyclonal

**Clone ID:** -

**MW:** Calculated MW: 26 kDa; Observed MW: 26 kDa

**Isotype:** IgG

**Purification:** Affinity Purified

**Species Reactivity:** Human,Mouse

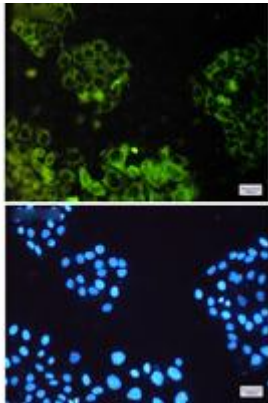
**Conjugation:** Unconjugated

**Modification:** Unmodified

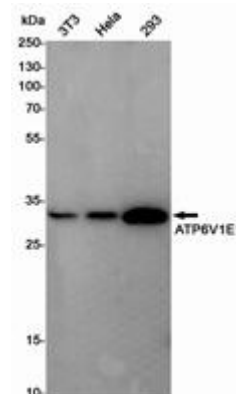
**Constituents:** PBS (without Mg<sup>2+</sup> and Ca<sup>2+</sup>), pH 7.3 containing 50% glycerol, 0.5% BSA and 0.02% sodium azide

**Research Areas:** Signal Transduction

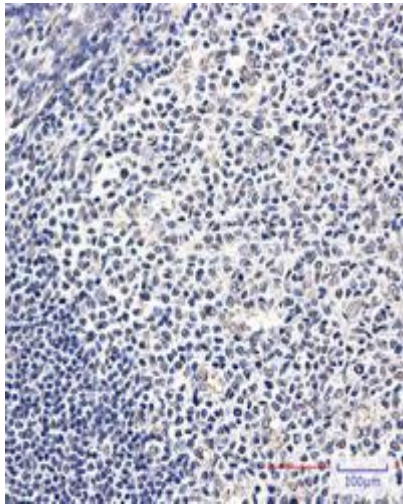
**Storage & Shipping:** Store at -20°C. Avoid repeated freezing and thawing



Immunocytochemistry analysis of ATP6V1E1 (green) in HeLa using ATP6V1E1 antibody, and DAPI (blue)



Western blot analysis of ATP6V1E1 in 3T3, HeLa, 293 lysates using ATP6V1E1 antibody.



Immunohistochemistry analysis of paraffin-embedded Human tonsil using ATP6V1E1 antibody. High-pressure and temperature Sodium Citrate pH 6.0 was used for antigen retrieval.