

## ATP6V1A RABBIT MAB

**Cat.#:** N263229

**Product Name:** Anti-ATP6V1A Rabbit Monoclonal Antibody

**Synonyms:** HO68; VA68; VPP2; Vma1; ARCL2D; ATP6A1; IECEE3; ATP6V1A1

**UNIPROT ID:** P38606

**Background:** Catalytic subunit of the peripheral V1 complex of vacuolar ATPase. V-ATPase vacuolar ATPase is responsible for acidifying a variety of intracellular compartments in eukaryotic cells. In aerobic conditions, involved in intracellular iron homeostasis, thus triggering the activity of Fe<sup>2+</sup> prolyl hydroxylase (PHD) enzymes, and leading to HIF1A hydroxylation and subsequent proteasomal degradation (PubMed:28296633). May play a role in neurite development and synaptic connectivity (PubMed:29668857).

**Immunogen:** Recombinant protein of human ATP6V1A

**Applications:** WB,IHC-P,IP

**Recommended Dilutions:** WB: 1/500-1/1000 IHC: 1/50-1/100 IP: 1/20

**Host Species:** Rabbit

**Clonality:** Rabbit Monoclonal

**Clone ID:** R03-5H1

**MW:** Calculated MW: 68 kDa; Observed MW: 68 kDa

**Isotype:** IgG

**Purification:** Affinity Purified

**Species Reactivity:** Human,Mouse,Rat

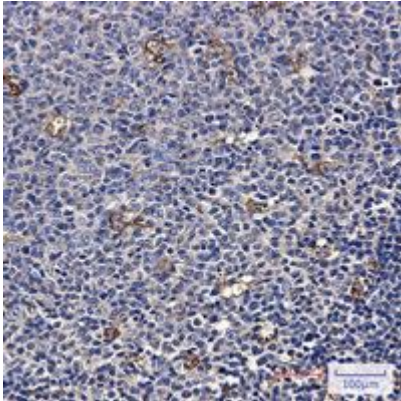
**Conjugation:** Unconjugated

**Modification:** Unmodified

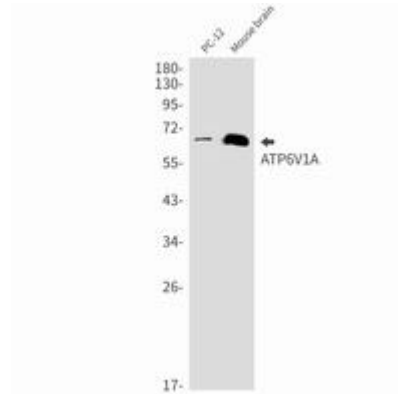
**Constituents:** PBS (without Mg<sup>2+</sup> and Ca<sup>2+</sup>), pH 7.3 containing 50% glycerol, 0.5% BSA and 0.02% sodium azide

**Research Areas:** Tags & Cell Markers

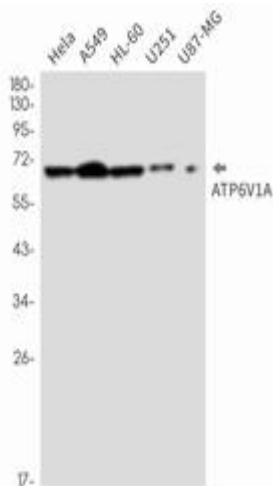
**Storage & Shipping:** Store at -20°C. Avoid repeated freezing and thawing



Immunohistochemistry analysis of paraffin-embedded Human tonsil using ATP6V1A antibody. High-pressure and temperature Sodium Citrate pH 6.0 was used for antigen retrieval.



Western blot analysis of ATP6V1A in PC-12, mouse brain lysates using ATP6V1A antibody.



Western blot analysis of ATP6V1A in HeLa, A549, HL-60, U251, U87-MG lysates using ATP6V1A antibody.