

ATP5PO RABBIT PAB

Cat.#: S212962

Product Name: Anti-ATP5PO Rabbit Polyclonal Antibody

Synonyms: ATPO; OSCP; ATP5O; HMC08D05

UNIPROT ID: P48047 (Gene Accession - BC021233)

Background: The protein encoded by this gene is a component of the F-type ATPase found in the mitochondrial matrix. F-type ATPases are composed of a catalytic core and a membrane proton channel. The encoded protein appears to be part of the connector linking these two components and may be involved in transmission of conformational changes or proton conductance. [provided by RefSeq, Jul 2008]

Immunogen: Fusion protein of human ATP5PO

Applications: ELISA, WB, IHC

Recommended Dilutions: IHC: 100-300;WB: 1000-5000;ELISA: 5000-10000

Host Species: Rabbit

Clonality: Rabbit Polyclonal

Isotype: Immunogen-specific rabbit IgG

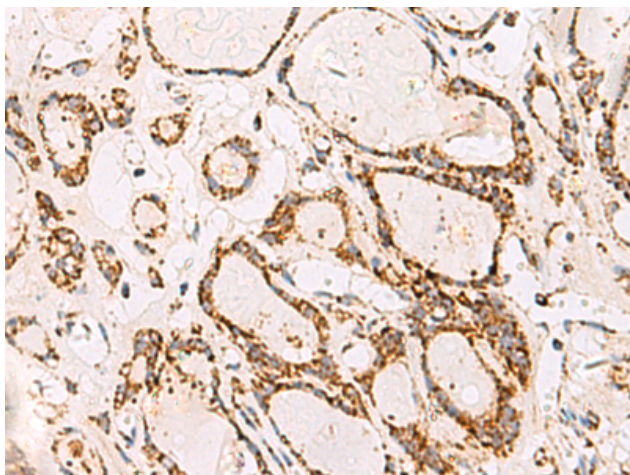
Purification: Antigen affinity purification

Species Reactivity: Human, Mouse

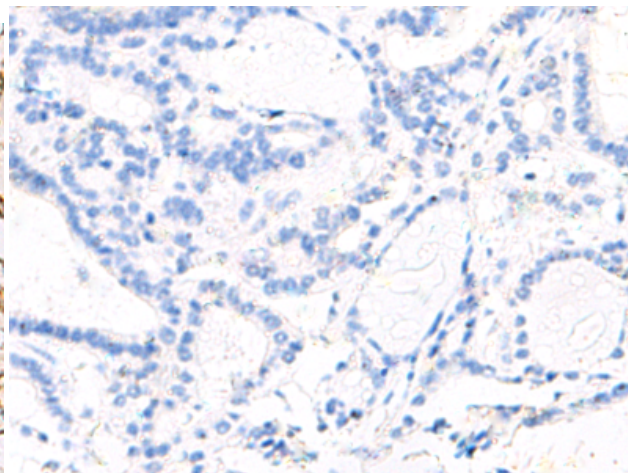
Constituents: PBS (without Mg²⁺ and Ca²⁺), pH 7.4, 150 mM NaCl, 0.05% Sodium Azide and 40% glycerol

Research Areas: Metabolism

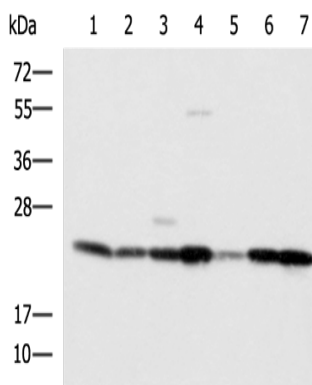
Storage & Shipping: Store at -20°C. Avoid repeated freezing and thawing



Immunohistochemistry analysis of paraffin embedded Human thyroid cancer tissue using 212962(ATP5PO Antibody) at a dilution of 1/90(Cytoplasm).



In comparison with the IHC on the left, the same paraffin-embedded Human thyroid cancer tissue is first treated with the fusion protein and then with 212962(Anti-ATP5PO Antibody) at dilution 1/90.



Gel: 12%SDS-PAGE, Lysate: 40 µg;
Lane 1-7: SKOV3, Hela cell, Mouse liver tissue,
Mouse heart tissue, Human placenta tissue,
HepG2 cell, Human heart tissue lysates;
Primary antibody: 212962(ATP5PO Antibody)
at dilution 1/1250;
Secondary antibody: HRP-conjugated Goat
anti rabbit IgG at 1/5000 dilution;
Exposure time: 5 seconds