

## ATP5IF1 RABBIT PAB

**Cat.#:** S216880

**Product Name:** Anti-ATP5IF1 Rabbit Polyclonal Antibody

**Synonyms:** IP; ATP1; ATP1P; ATP1F1

**UNIPROT ID:** Q9UII2 (Gene Accession - BC009677 )

**Background:** This gene encodes a mitochondrial ATPase inhibitor. Alternative splicing occurs at this locus and three transcript variants encoding distinct isoforms have been identified.

**Immunogen:** Fusion protein of human ATP5IF1

**Applications:** ELISA, WB, IHC

**Recommended Dilutions:** IHC: 50-200;WB: 500-2000;ELISA: 5000-10000

**Host Species:** Rabbit

**Clonality:** Rabbit Polyclonal

**Isotype:** Immunogen-specific rabbit IgG

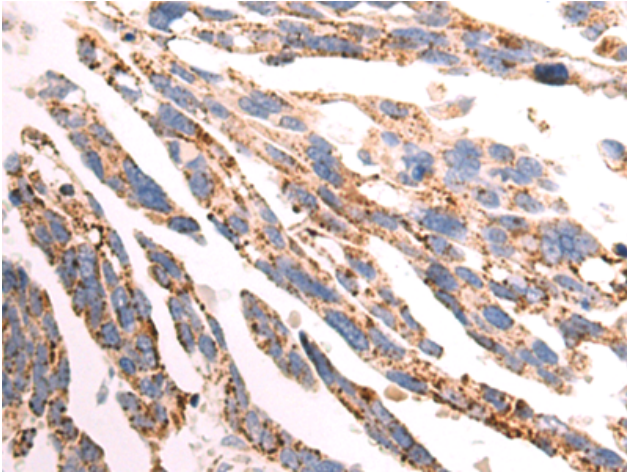
**Purification:** Antigen affinity purification

**Species Reactivity:** Human

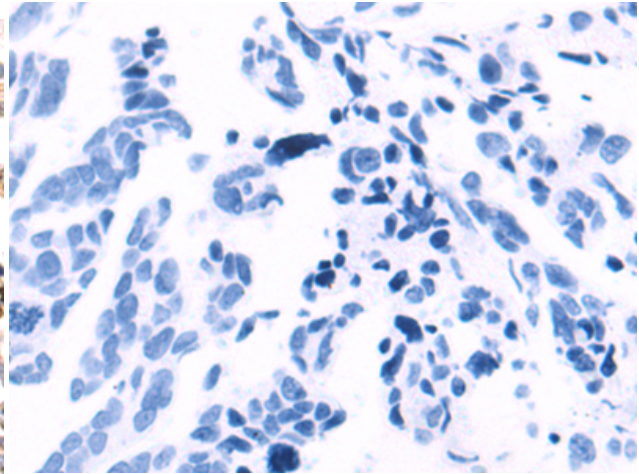
**Constituents:** PBS (without Mg<sup>2+</sup> and Ca<sup>2+</sup>), pH 7.4, 150 mM NaCl, 0.05% Sodium Azide and 40% glycerol

**Research Areas:** Metabolism

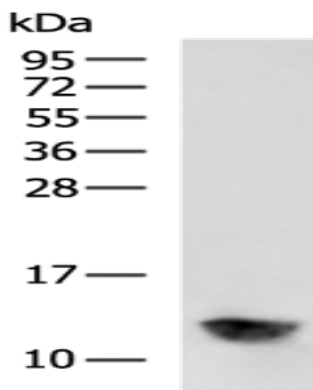
**Storage & Shipping:** Store at -20°C. Avoid repeated freezing and thawing



Immunohistochemistry analysis of paraffin embedded Human colorectal cancer tissue using 216880(ATP5IF1 Antibody) at a dilution of 1/85(Cytoplasm).



In comparison with the IHC on the left, the same paraffin-embedded Human colorectal cancer tissue is first treated with the fusion protein and then with 216880(Anti-ATP5IF1 Antibody) at dilution 1/85.



Gel: 12%SDS-PAGE, Lysate: 40  $\mu$ g;  
Lane: K562 cell lysate;  
Primary antibody: 216880(ATP5IF1 Antibody) at dilution 1/550;  
Secondary antibody: HRP-conjugated Goat anti rabbit IgG at 1/5000 dilution;  
Exposure time: 90 seconds