

## ATP SYNTHASE C RABBIT MAB

**Cat.#:** N261579

**Product Name:** Anti-ATP Synthase C Rabbit Monoclonal Antibody

**Synonyms:** ATP synthase lipid-binding protein; ATP synthase membrane subunit c locus 1

**UNIPROT ID:** P05496

**Background:** Mitochondrial membrane ATP synthase (F1F0 ATP synthase or Complex V) produces ATP from ADP in the presence of a proton gradient across the membrane which is generated by electron transport complexes of the respiratory chain.

**Immunogen:** A synthetic peptide of human ATP synthase C

**Applications:** WB, ICC/IF

**Recommended Dilutions:** WB: 1/500-1/1000 IF: 1/50-1/200

**Host Species:** Rabbit

**Clonality:** Rabbit Monoclonal

**Clone ID:** R02-0D4

**MW:** Calculated MW: 14 kDa; Observed MW: 14 kDa

**Isotype:** IgG

**Purification:** Affinity Purified

**Species Reactivity:** Human

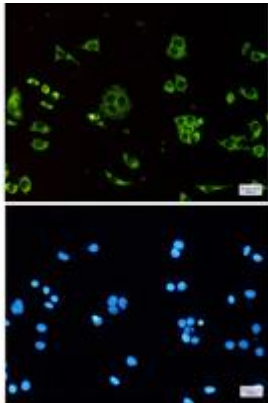
**Conjugation:** Unconjugated

**Modification:** Unmodified

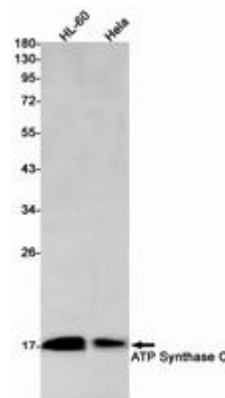
**Constituents:** PBS (without Mg<sup>2+</sup> and Ca<sup>2+</sup>), pH 7.3 containing 50% glycerol, 0.5% BSA and 0.02% sodium azide

**Research Areas:** Signal Transduction

**Storage & Shipping:** Store at -20°C. Avoid repeated freezing and thawing



Immunocytochemistry analysis of ATP synthase C (green) in Hela using ATP synthase C antibody, and DAPI (blue)



Western blot analysis of ATP Synthase C in HL-60, Hela lysates using ATP Synthase C antibody.