

ATL3 RABBIT PAB

Cat.#: S218342

Product Name: Anti-ATL3 Rabbit Polyclonal Antibody

Synonyms: HSNIF

UNIPROT ID: Q6DD88 (Gene Accession - BC077727)

Background: This gene encodes a member of a family of dynamin-like, integral membrane GTPases. The encoded protein is required for the proper formation of the network of interconnected tubules of the endoplasmic reticulum. Mutations in this gene may be associated with hereditary sensory neuropathy type IF. Alternatively spliced transcript variants that encode distinct isoforms have been described.

Immunogen: Fusion protein of human ATL3

Applications: ELISA, WB, IHC

Recommended Dilutions: IHC: 50-300;WB: 500-2000;ELISA: 5000-10000

Host Species: Rabbit

Clonality: Rabbit Polyclonal

Isotype: Immunogen-specific rabbit IgG

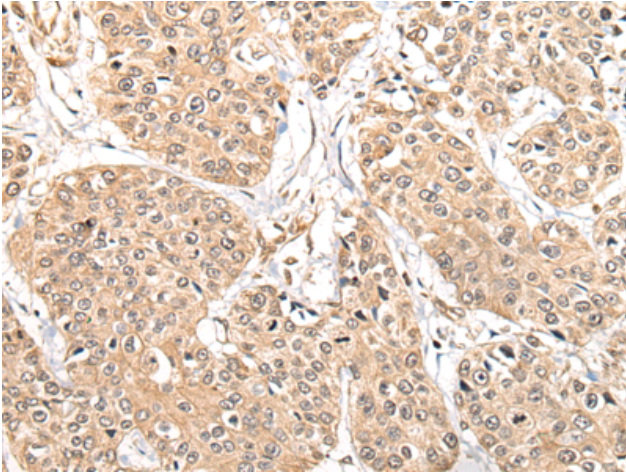
Purification: Antigen affinity purification

Species Reactivity: Human, Mouse, Rat

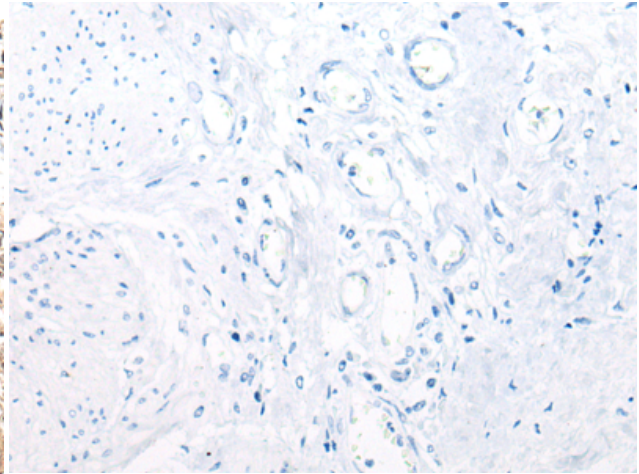
Constituents: PBS (without Mg²⁺ and Ca²⁺), pH 7.4, 150 mM NaCl, 0.05% Sodium Azide and 40% glycerol

Research Areas: Signal Transduction

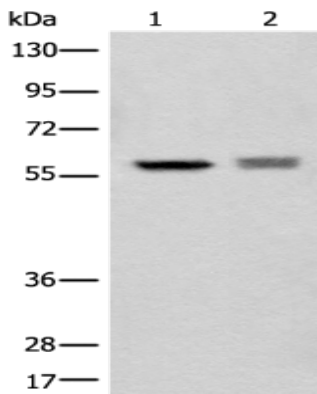
Storage & Shipping: Store at -20°C. Avoid repeated freezing and thawing



Immunohistochemistry analysis of paraffin embedded Human prostate cancer tissue using 218342(ATL3 Antibody) at a dilution of 1/85(Cell membrane).



In comparison with the IHC on the left, the same paraffin-embedded Human prostate cancer tissue is first treated with the fusion protein and then with 218342(Anti-ATL3 Antibody) at dilution 1/85.



Gel: 8%SDS-PAGE, Lysate: 40 µg;
Lane 1-2:HEPG2 and Jurkat cell lysates;
Primary antibody: 218342(ATL3 Antibody) at dilution 1/800;
Secondary antibody: Goat anti rabbit IgG at 1/8000 dilution;
Exposure time: 3 seconds