

ATG7 RABBIT PAB

Cat.#: N225874

Product Name: Anti-ATG7 Rabbit pAb

Synonyms: hAGP7; Ubiquitin-activating enzyme E1-like protein; APG7L

UNIPROT ID: O95352

Background: The molecular machinery of autophagy was largely discovered in yeast and referred to as autophagy-related (Atg) genes. Formation of the autophagosome involves a ubiquitin-like conjugation system in which Atg12 is covalently bound to Atg5 and targeted to autophagosome vesicles. This conjugation reaction is mediated by the ubiquitin E1-like enzyme Atg7 and the E2-like enzyme Atg10.

Immunogen: A synthesized peptide derived from human Atg7(Apg7)

Applications: WB,ICC/IF

Recommended Dilutions: WB: 1/500-1/1000 IF: 1/50-1/200

Host Species: Rabbit

Clonality: Rabbit Polyclonal

Clone ID: -

MW: Calculated MW: 78 kDa; Observed MW: 78 kDa

Isotype: IgG

Purification: Affinity Chromatography

Species Reactivity: Human,Mouse,Rat

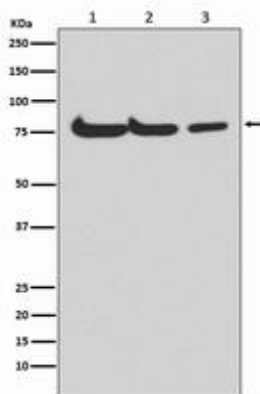
Conjugation: Unconjugated

Modification: Unmodified

Constituents: PBS (without Mg²⁺ and Ca²⁺), pH 7.3 containing 50% glycerol, 0.5% BSA and 0.02% sodium azide

Research Areas: AutophagyAutophagosome

Storage & Shipping: Store at -20°C. Avoid repeated freezing and thawing



Western blot analysis of Atg7(Apg7) in (1) HepG2 lysates; (2) mouse spleen lysates; (3) rat kidney lysates using ATG7 antibody.